

VeriSens® – Web Interface

AN201413/v0.2/2023-08-21

Description

In this document we will give answers to questions that are asked very often regarding the key benefits of the web interface, its configuration and compatibility.

Products

VeriSens® Vision Sensors

Preparation

-

Contents

1	VeriSens® Web Interface FAQs	2
1.1	What are the main advantages of the web interface?	2
1.2	What can I do with the web interface?	2
1.3	Where do I configure the web interface?	3
1.4	Does the web interface work with my MAC, iPad or Android tablet?	4
1.5	Which limitations are set by web technology?	4
1.6	Now you use a web interface in the industrial section. Why?	4
1.7	What does this mean for VeriSens®?	4
1.8	Which screen resolutions and sizes are supported?	4
1.9	Does the web interface replace the Application Suite?	5
2	Support	6
3	Disclaimer	6

1 VeriSens® Web Interface FAQs

1.1 What are the main advantages of the web interface?

The web interface provides 3 advantages for customers:

1. VeriSens® operation directly through the user interface (GUI) of the machine
2. Configuration instead of programming: Turnkey ready after 3 minutes
3. No conflict of different software revisions machine GUI / VeriSens® because of browser usage

And there is one other positive point: You do not have to install 3rd party software on your machines, as most commercial machine controls already have web browsers included!

1.2 What can I do with the web interface?

The web interface gives the opportunity to **see through the eyes of VeriSens® while it is operating**, showing you the statistics of OK and NOK images right away and giving you the current inspection rate.



You also can **reconfigure and re-adjust jobs** and do the following:

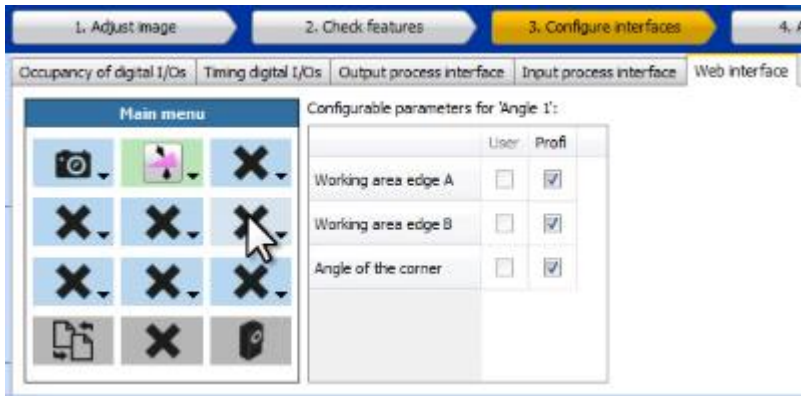
- Switch jobs
- Save / load jobs and backups
- View error images
- View Statistics
- Re-configure features

For the re-configuration please note, that the web interface basically offers the same feature range as the VeriSens® in use. Which of the features and parameters actually are available for re-configuration has to be set in the Application Suite while configuring the job. (Configure interfaces → web interface)

1.3 Where do I configure the web interface?

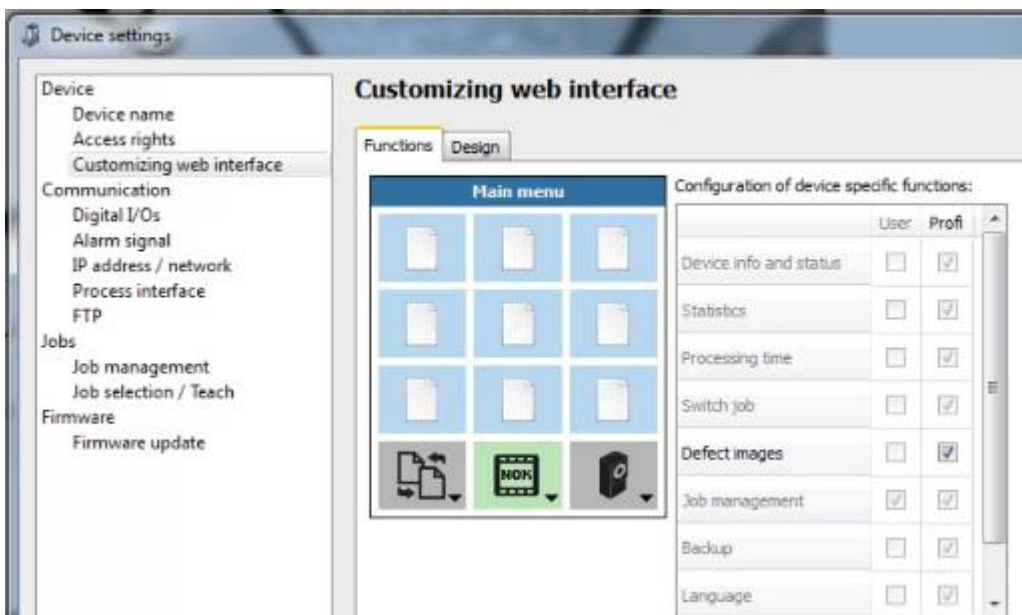
The web interface can be configured during the job configuration. Under *Configure interfaces / Web interface*, you have the opportunity to choose the features and their belonging parameters that shall be re-adjusted in the web interface while *VeriSens®* is doing the inspection.

Consequently, only the features that are offered by the *VeriSens®* in use can be chosen.



Please configure your *VeriSens®* options, as well as the design, in the device settings:

- Switch jobs
- View NOK Images
- View Statistics
- Save jobs or load jobs to the PC
- Copy, delete and rename jobs
- Change languages
- ...



Please note that it is also possible to set profiles and specific access rights for the web interface.

1.4 Does the web interface work with my Mac, cell phone or tablet?

The key point for compatibility is the browser. If an officially supported browser (according to the documentation “help.pdf”) is installed at these devices everything should work smoothly. Even not officially supported browser might work in many cases.

1.5 Which limitations are set by web technology?

Web browsers have been designed to show websites. So far, 100% compatibility between different browsers (and their particular releases) is not given yet due to missing standards especially in the past. Accordingly the same content might be shown differently and even the way how browser refresh the content may deviate. To avoid that, the programmer must act preventive: He has to take the peculiarities of each browser and each browser release version into consideration – which is hardly possible.

You can observe the same for the reliability: Surfing the internet, reliability is not a huge problem. Simply click on the link again. In the industrial section, the expectations are much higher.

1.6 Now you use a web interface in the industrial section. Why?

Today web browsers are the “least common denominator” of various technology platforms, which makes them to a predestinated “all-surround solution”. A lot of control systems do have an integrated web browser. A further advantage: Web server in the device and display via browser always provide compatibility, independent from the VeriSens® software version. This is extremely useful if you exchange the device. Conclusion: Applying a web interface in the industrial section has advantages as well as disadvantages. You have to be familiar with them.

Advantages:

Universal, independent from platform, easy to apply, no conflicts regarding revisions

Disadvantages:

The level of reliability is considerably lower, compared to other solutions. A website can “freeze”. Especially older browsers (e.g. IE8) follow fewer standards. This may lead to deviations in the data display. Also the data exchange rate is relatively slow.

1.7 What does this mean for VeriSens®?

With the web interface, the customers are given the opportunity to correct the configuration of the vision sensor within a few minutes. The necessary user interface can be created, also customized.

Disadvantages of the web interface come into account, if you want to use the web interface as a 24/7 surveillance tool without user intervention. This is a reliability that cannot be provided by web technology today. In this case, the user has to become active, e.g. reloading the “website”.

Advantages and disadvantages should always be weighed against each other and be discussed with the customer.

1.8 Which screen resolutions and sizes are supported?

We successfully tested - as minimum requirement - the usability of the web interface on a 5.7” screen (4:3 screen ratio) and a resolution of 640 x 480 pixels – larger screens or wider screen ratio are possible.

1.9 Does the web interface replace the Application Suite?

No, these are completely different solutions. The Application Suite enables a qualified person to create jobs and to change any set-up on a PC. The web interface provides an optimized (and accordingly reduced) user interface for machine setter and operator to modify settings.

2 Support

In the case of any questions or for troubleshooting please contact our support team.

Worldwide

Baumer Optronic GmbH

Badstrasse 30 · DE-01454 Radeberg

Phone +49 3528 4386 845

support.verisens@baumer.com

3 Disclaimer

All product and company names mentioned are trademarks or registered trademarks of their respective owners.

All rights reserved. Reproduction of this document in whole or in part is only permitted with previous written consent from Baumer Optronic GmbH.

Revisions in the course of technical progress and possible errors reserved.

Baumer Group

The Baumer Group is an international leading manufacturer and developer of sensors, encoders, measuring instruments and components for automated image-processing. Baumer combines innovative technology and customer-oriented service into intelligent solutions for factory and process automation and offers a uniquely wide range of related products and technologies. With around 2,300 employees and 38 subsidiaries and in 19 countries, the family-owned company is always close to the customer. Industrial clients in many sectors gain vital advantages and measurable added value from the worldwide consistency of Baumer's high quality standards and its considerable innovative potential. For further information, visit www.baumer.com on the internet.

**Baumer Optronic GmbH**

Badstrasse 30 · DE-01454 Radeberg
Phone +49 3528 4386 0 · Fax +49 3528 4386 86
sales.cc-vt@baumer.com · www.baumer.com