

Overview

- emitter
- through beam sensor
- 2,5 m
- pulsed infrared diode
- cable 3 pin, 2 m
- -25 ... 65 °C
- IP 65



Picture similar



Technical data

General data

Type	Through beam sensor
Emitter / receiver	Emitter
Light source	Pulsed infrared diode
Actual range Sb	2.5 m
Nominal range Sn	3 m
Wave length	880 nm

Electrical data

Voltage supply range +Vs	10 ... 30 VDC
Current consumption max. (no load)	48 mA
Current consumption typ.	17 mA
Reverse polarity protection	Yes

Mechanical data

Width / diameter	8 mm
Height / length	58 mm
Depth	15 mm
Type	Rectangular
Housing material	Aluminum anodized
Front (optics)	PC
Connection types	Cable 3 pin, 2 m

Ambient conditions

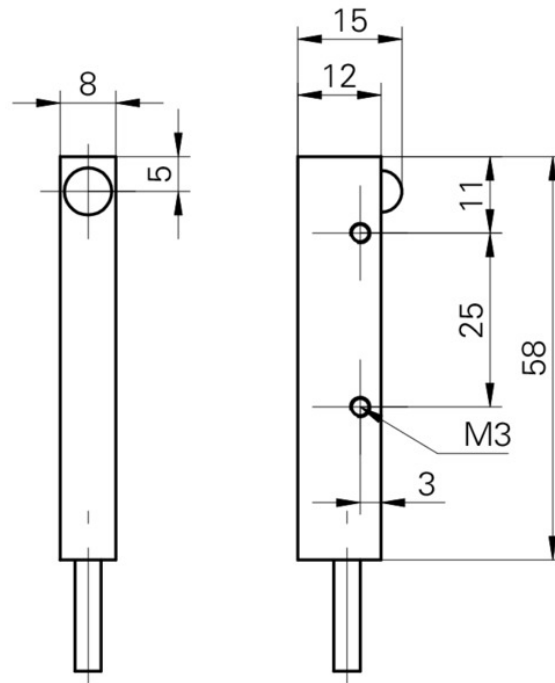
Operating temperature	-25 ... +65 °C
Protection class	IP 65

FSDM 08D9002

Through beam sensors - subminiature

Article number: 10218471

Technical drawings



Connection diagram

