

## Helical beam coupling (D1=06 / D2=06)

For encoder with solid shaft

Article number: 10107670

### Overview

- Manufactured from one piece
- High torques
- Very high torsional stiffness



### Technical data

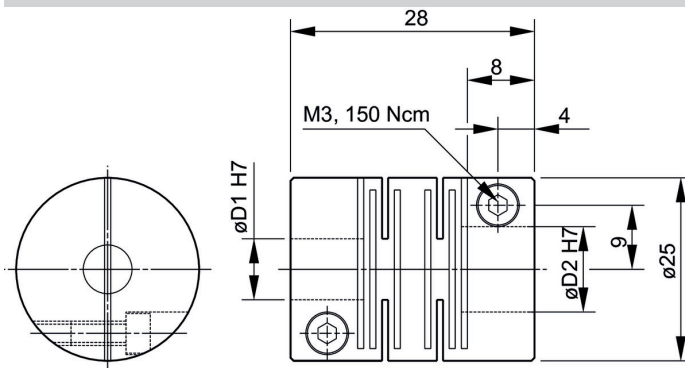
#### Technical data

Shaft diameter D1	6 mm
Shaft diameter D2	6 mm
Operating speed	≤10000 rpm
Operating temperature	-20...+120 °C
Moment of inertia	23.9 gcm <sup>2</sup>
Torsional rigidity	533 Nm/rad

#### Technical data

Maximum torque	600 Ncm
Admissible axial movement	± 0.1 mm
Admissible parallel misalignment	± 0.1 mm
Admissible angular error	± 1 °
Weight approx.	24 g
Material	Aluminium

### Dimensions



## Helical beam coupling (D1=06 / D2=06)

For encoder with solid shaft

Article number: 10107670

### Assembly drawing

