

Spiral coupling (D1=10 / D2=10)

For encoder with solid shaft

Article number: 11261563

Overview

- Manufactured from one piece
- Optimum compensation of misalignment
- Transmission of rotation free from backlash
- High torsional stiffness
- Low restoring forces
- Vibration damping



Technical data

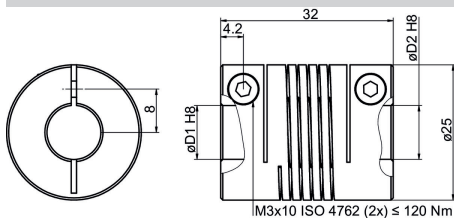
Technical data

Shaft diameter D1	10 mm
Shaft diameter D2	10 mm
Operating speed	≤6000 rpm
Operating temperature	-30...+150 °C
Moment of inertia	29 gcm ²
Torsional rigidity	16 Nm/rad
Radial spring stiffness	45 N/mm

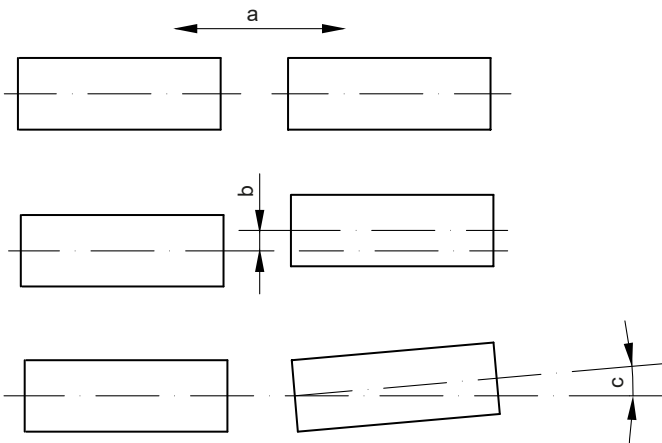
Technical data

Maximum torque	100 Ncm
Admissible axial movement	± 0.5 mm
Admissible parallel misalignment	± 0.35 mm
Admissible angular error	± 4 °
Weight approx.	34 g
Material	aluminium, anodised

Dimensions



Assembly drawing



a = Admissible axial movement
b = Admissible parallel misalignment
c = Admissible angular error