

AMG 71

Solid shaft with synchro flange

Single and multturn encoders 13 bit ST / 12 bit MT (option: 16 bit MT)

Overview

- Encoder multiturn / SSI
- Optical sensing method
- Resolution: singleturn 13 bit, multiturn 12 bit
- Multiturn sensing with microGen technologie, without gear or battery
- With additional incremental signals (SinCos 1 Vpp)



Technical data

Technical data - electrical ratings

Voltage supply	7...30 VDC
Consumption w/o load	≤100 mA
Initializing time	≤ 200 ms after power on
Interface	SSI
Function	Multiturn
Steps per revolution	8192 / 13 bit
Number of revolutions	4096 / 12 bit 65536 / 16 bit (option)
Additional outputs	SinCos
Bandwidth	200 kHz (-3 dB)
Difference of SinCos amplitude	≤20 mV
DC offset	≤20 mV
Sensing method	Optical
Code	Gray
Code sequence	CW
Inputs	SSI clock
Incremental output	2048 pulses (SinCos)
Interference immunity	EN 61000-6-2
Emitted interference	EN 61000-6-3
Diagnostic function	LED failure Self-diagnosis Code continuity check

Technical data - electrical ratings

Approval	CE UL approval / E217823
----------	-----------------------------

Technical data - mechanical design

Size (flange)	ø60 mm
Shaft type	ø6 mm solid shaft
Flange	Synchro flange
Protection EN 60529	IP 66
Operating speed	≤5000 rpm (mechanical)
Operating torque typ.	2 Ncm
Rotor moment of inertia	25 gcm ²
Admitted shaft load	≤50 N axial ≤120 N radial
Material	Housing: aluminium alloy Shaft: stainless steel
Operating temperature	-20...+85 °C
Resistance	IEC 60068-2-6 Vibration 10 g, 10-2000 Hz IEC 60068-2-27 Shock 100 g, 6 ms
Explosion protection	II 3 G Ex ec IIC T4 Gc X (gas) II 3 D Ex tc IIIC T85°C Dc X (dust) (only with option ATEX)
Weight approx.	350 g
Connection	Terminal cover

Optional

- Multiturn 16 bit

AMG 71

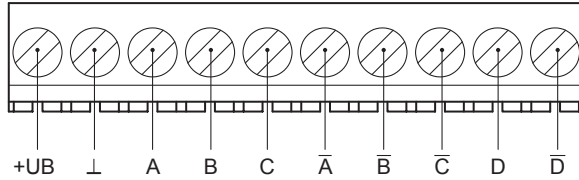
Solid shaft with synchro flange

Single and multturn encoders 13 bit ST / 12 bit MT (option: 16 bit MT)

Terminal assignment

View A (see dimension)

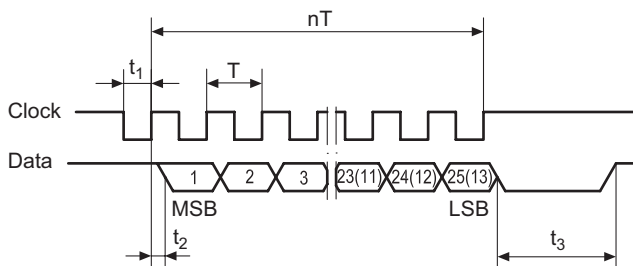
Connecting terminal



Terminal significance

+UB	Voltage supply
⊥	Ground
A	Cosinus
A̅	Cosinus inverted
B	Sinus
B̅	Sinus inverted
C	Clock
C̅	Clock
D	Data
D̅	Data

Data transfer



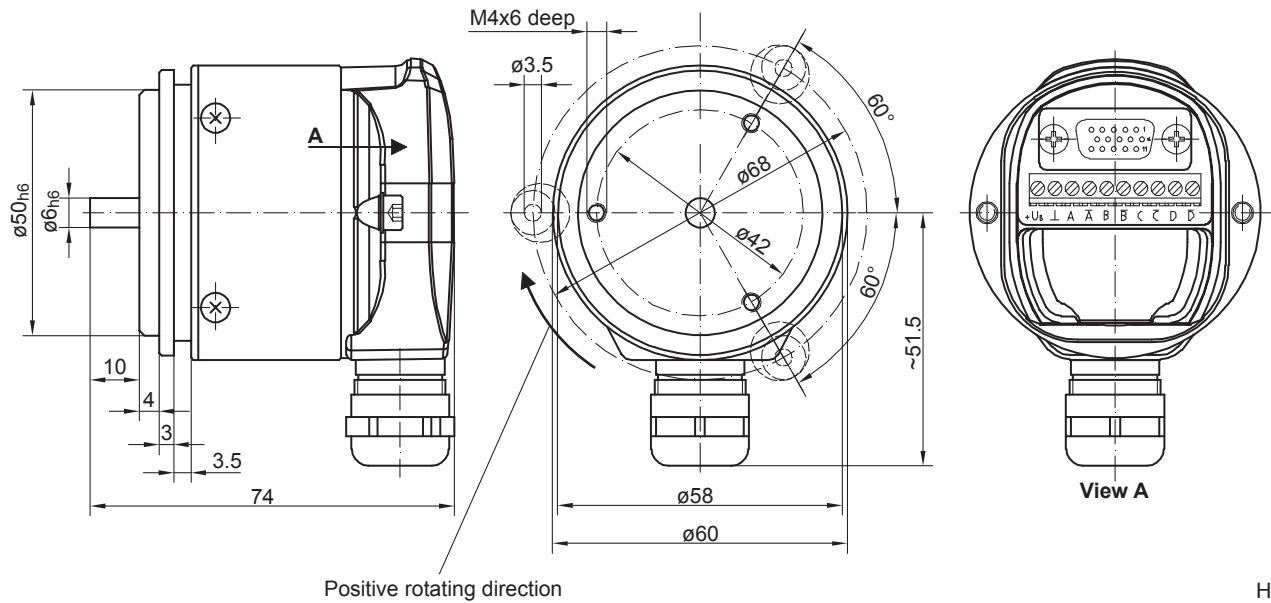
T =	1.25...10 µs
t ₁ =	0.63...5 µs
t ₂ =	0.4 µs
t ₃ =	12...30 µs
n =	Number of bits
Clock frequency	100...800 kHz

AMG 71

Solid shaft with synchro flange

Single and multturn encoders 13 bit ST / 12 bit MT (option: 16 bit MT)

Dimensions



HM07M28048

AMG 71

Solid shaft with synchro flange

Single and multiturn encoders 13 bit ST / 12 bit MT (option: 16 bit MT)

Ordering reference

	AMG71	S	##	S2048
Product				
Absolute encoder	AMG71			
Interface/interfaces				
SSI		S		
Absolute share				
13 bit singleturn			13	
13 bit singleturn + 12 bit multiturn			25	
13 bit singleturn + 16 bit multiturn			29	
Additional output				
SinCos, 2048 pulses				S2048

Accessories

Mounting accessories

Spring disk coupling K 35 (shaft ø6...12 mm)

Diagnostic accessories

11075858	Analyzer for encoders HENQ 1100
11075880	Analyzer for encoders HENQ 1100 B