

Bellows coupling (D1=06 / D2=10)

For encoder with solid shaft

Article number: 11050507

Overview

- Backlash-free angle-synchronous transmission
- Optimum compensation of misalignments
- Very high torsional spring stiffness
- Small restoring force
- Vibration damping
- Stainless steel bellows



Technical data

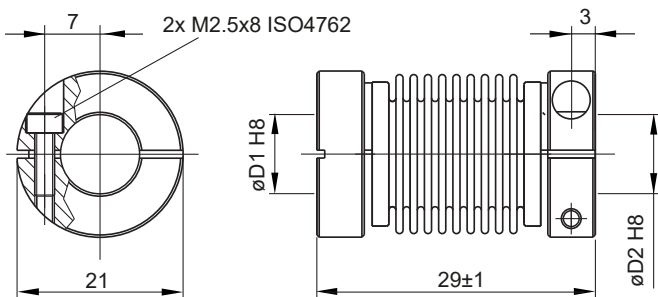
Technical data

Shaft diameter D1	6 mm
Shaft diameter D2	10 mm
Operating speed	≤10000 rpm
Operating temperature	-40...+140 °C
Moment of inertia	9 gcm ²
Torsional rigidity	150 Nm/rad
Radial spring stiffness	25 N/mm

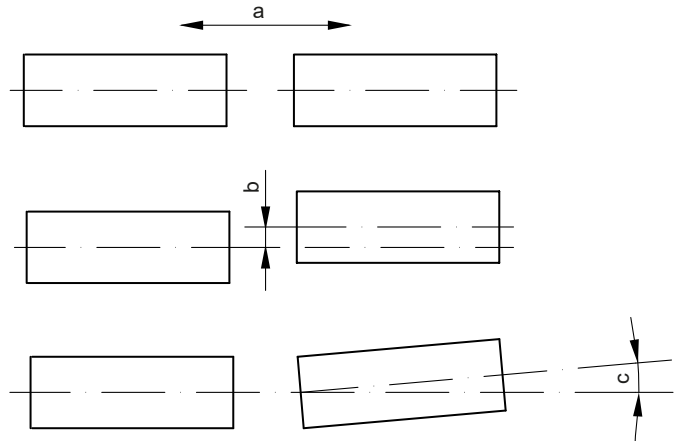
Technical data

Maximum torque	120 Ncm
Admissible axial movement	± 0.4 mm
Admissible parallel misalignment	± 0.25 mm
Admissible angular error	± 4 °
Weight approx.	15 g
Material	Bellows: stainless steel Flange: Aluminium, anodised

Dimensions



Assembly drawing



a = Admissible axial movement
b = Admissible parallel misalignment
c = Admissible angular error