

Bellows coupling (D1=10 / D2=10)

For encoder with solid shaft

Article number: 11053277

Overview

- Backlash-free angle-synchronous transmission
- Optimum compensation of misalignments
- Very high torsional spring stiffness
- Small restoring force
- Vibration damping
- Stainless steel bellows



Technical data

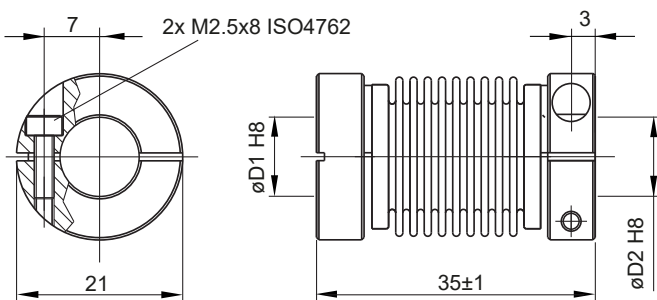
Technical data

Shaft diameter D1	10 mm
Shaft diameter D2	10 mm
Operating speed	≤10000 rpm
Operating temperature	-40...+140 °C
Moment of inertia	9.5 gcm ²
Torsional rigidity	140 Nm/rad
Radial spring stiffness	10 N/mm

Technical data

Maximum torque	100 Ncm
Admissible axial movement	± 0.5 mm
Admissible parallel misalignment	± 0.3 mm
Admissible angular error	± 4 °
Weight approx.	16 g
Material	Bellows: stainless steel Flange: Aluminium, anodised

Dimensions

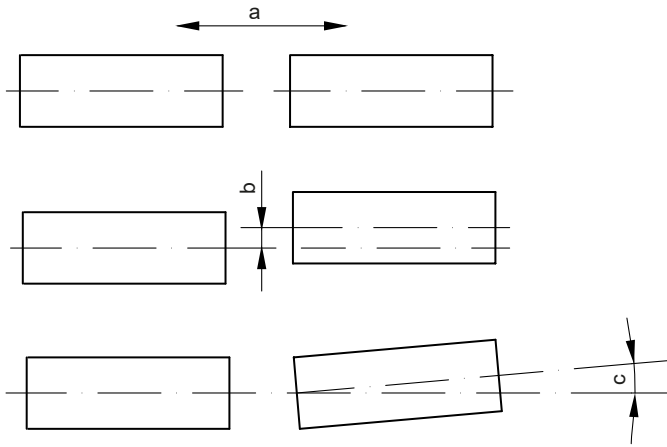


Bellows coupling (D1=10 / D2=10)

For encoder with solid shaft

Article number: 11053277

Assembly drawing



a = Admissible axial movement
b = Admissible parallel misalignment
c = Admissible angular error