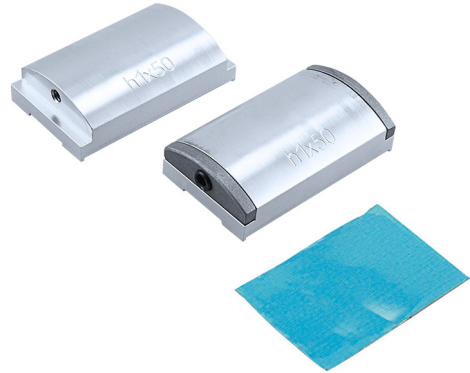


# Clamp Elements CX 29 x 29 mm V4A IP69K

Article number: 11217114

## overview

- Clamp elements to insert standard CX series cameras (VCXG and VCXU) into the "Housing base set B V4A VCXG.I r IP69K" (11207844)



## technical data

### mechanical data

weight	≤ 140 g
material	aluminum

### environmental conditions

operating temperature	-15 ... +70 °C
-----------------------	----------------

## Principle

