

## Coupling CPS25 (L=19, D1=08 / D2=10)

For encoder with solid shaft

Article number: 11065920

### Overview

- Precision coupling
- Torsionally stiff coupling with low installation depth
- Pluggable
- Electrically insulating center disk
- Suitable for very high speeds



### Technical data

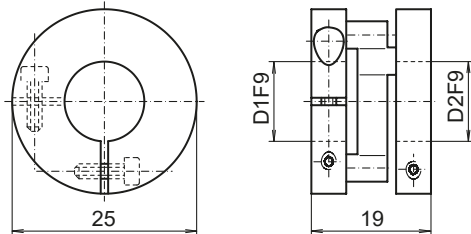
#### Technical data

Shaft diameter D1	8 mm
Shaft diameter D2	10 mm
Operating speed	≤13500 rpm
Operating temperature	-30...+80 °C
Moment of inertia	≤ 20 gcm <sup>2</sup>
Maximum torque	100 Ncm

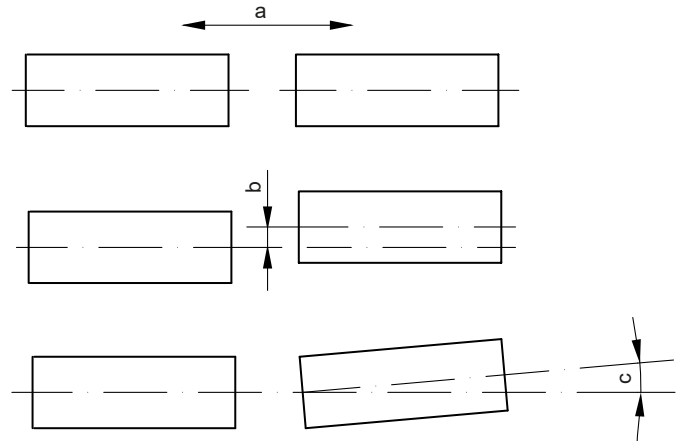
#### Technical data

Admissible parallel misalignment	≤ 0.5 mm
Admissible angular error	≤ 1 °
Weight approx.	18 g
Mechanical mounting	Clamping hub
Material	Hub: aluminium Centre disc: plastic

### Dimensions



### Assembly drawing



a = Admissible axial movement  
b = Admissible parallel misalignment  
c = Admissible angular error