

## Coupling CPS37 (L=24, D1=14 / D2=06)

For encoder with solid shaft

Article number: 11069359

### Overview

- Precision coupling
- Torsionally stiff coupling with low installation depth
- Pluggable
- Electrically insulating center disk
- Suitable for very high speeds



### Technical data

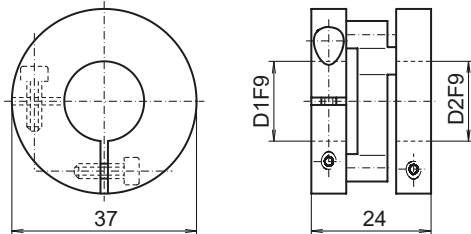
#### Technical data

Shaft diameter D1	14 mm
Shaft diameter D2	6 mm
Operating speed	≤13500 rpm
Operating temperature	-30...+80 °C
Moment of inertia	≤ 100 gcm <sup>2</sup>
Maximum torque	300 Ncm

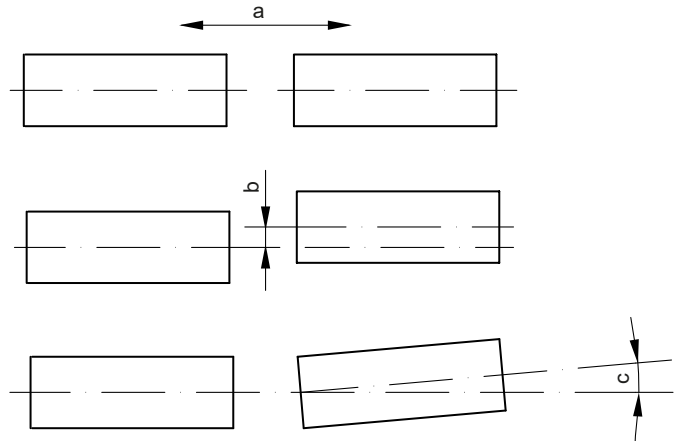
#### Technical data

Admissible parallel misalignment	≤ 1 mm
Admissible angular error	≤ 1 °
Weight approx.	42 g
Mechanical mounting	Clamping hub
Material	Hub: aluminium Centre disc: plastic

### Dimensions



### Assembly drawing



a = Admissible axial movement  
b = Admissible parallel misalignment  
c = Admissible angular error