

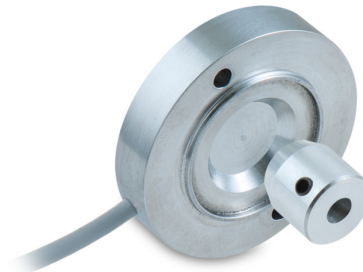
EAM500-K - analog

Magnet rotor bore ø6 mm or M7 screw

Magnetic singleturn encoder kit 12 bit, analog

产品一览

- Encoder kit singleturn / Analog
- Contactless measuring method
- Flat design
- Maintenance-free for the entire service life
- Designed for harsh environmental conditions
- Operating temperature -40...+85 °C
- Resolution: 12 bit
- Redundant version available
- Protection IP 67, radial cable connection



技术数据

技术数据 – 电气参数

电源电压	8...30 VDC 12...30 VDC 5 VDC ± 10%
反极性保护	是 (8...30 VDC / 12...30 VDC)
短路保护	是 (14 VDC或接地)
典型电流消耗	22 mA (24 VDC · 12 mA Iout · 无负载 · 电流输出) 10 mA (24 VDC · 无负载 · 电压输出) 8 mA (5 VDC · 无负载 · 电压输出)
初始化时间	≤ 20 ms (上电后)
接口	模拟量 0...10 V / 0.5...4.5 V / 4...20 mA / 分辨率: 12位
功能	单圈
测量范围	30°...360° 参见物料号
绝对精度	±1,8 ° (+25 °C)
感应原理	磁式
抗干扰性	EN 61000-6-2
辐射干扰	EN 61000-6-3

技术数据 – 机械参数

尺寸 (法兰)	ø50 mm
轴类型	ø6 mm (磁转子安装孔) M7 螺钉
轴向误差	1 ... 3 mm
径向误差	±0,8 mm
防护等级 (EN 60529)	IP 67
运行速度	≤120 rpm
材质	外壳: 铝 磁转子: 阳极氧化铝
工作温度	-40...+85 °C
使用寿命	无限制
耐抗性	EN 60068-2-6 抗振动20 g · 10-2000 Hz EN 60068-2-27 抗冲击50 g · 11 ms
近似重量	53 g
连接	0.3米径向电缆出线

可选配件

- DEUTSCH or AMP connector on cable end on request

EAM500-K - analog

Magnet rotor bore $\varnothing 6$ mm or M7 screw

Magnetic singleturn encoder kit 12 bit, analog

端子定义

Cable

Core color	Signal	Description
White	0 V	Ground
Brown	+Vs	Voltage supply
Green	Uout/lout	Output

Cable data: 3 x 0.25 mm²

Cable / redundant version

Core color	Signal	Description
White	0 V1/2	Ground 1/2
Brown	+Vs1	Voltage supply 1
Green	Uout1	Output 1
Yellow	+Vs2	Voltage supply 2
Grey	Uout2	Output 2

Cable data: 5 x 0.25 mm²

端子含义

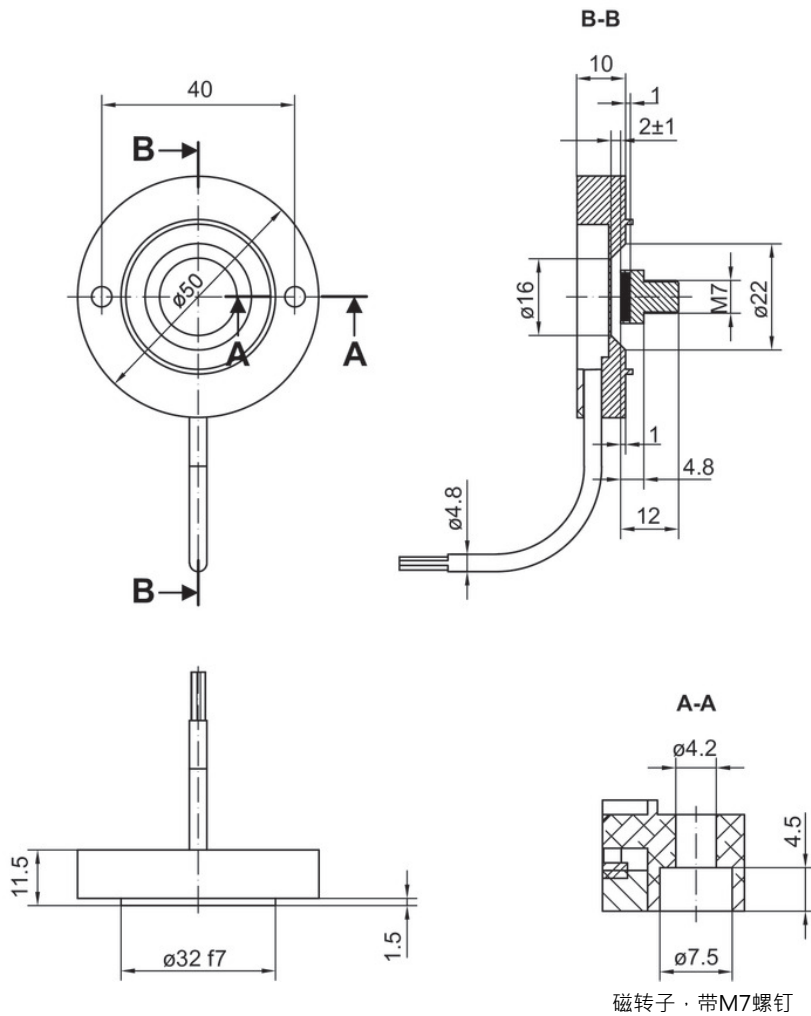
+Vs	Encoder voltage supply
0 V	Encoder ground connection relating to +Vs
lout	Current output, load: <500 Ω
Uout	Voltage output Load resistor: >3 k Ω between Uout / 0 V

EAM500-K - analog

Magnet rotor bore $\varnothing 6$ mm or M7 screw

Magnetic singleturn encoder kit 12 bit, analog

尺寸

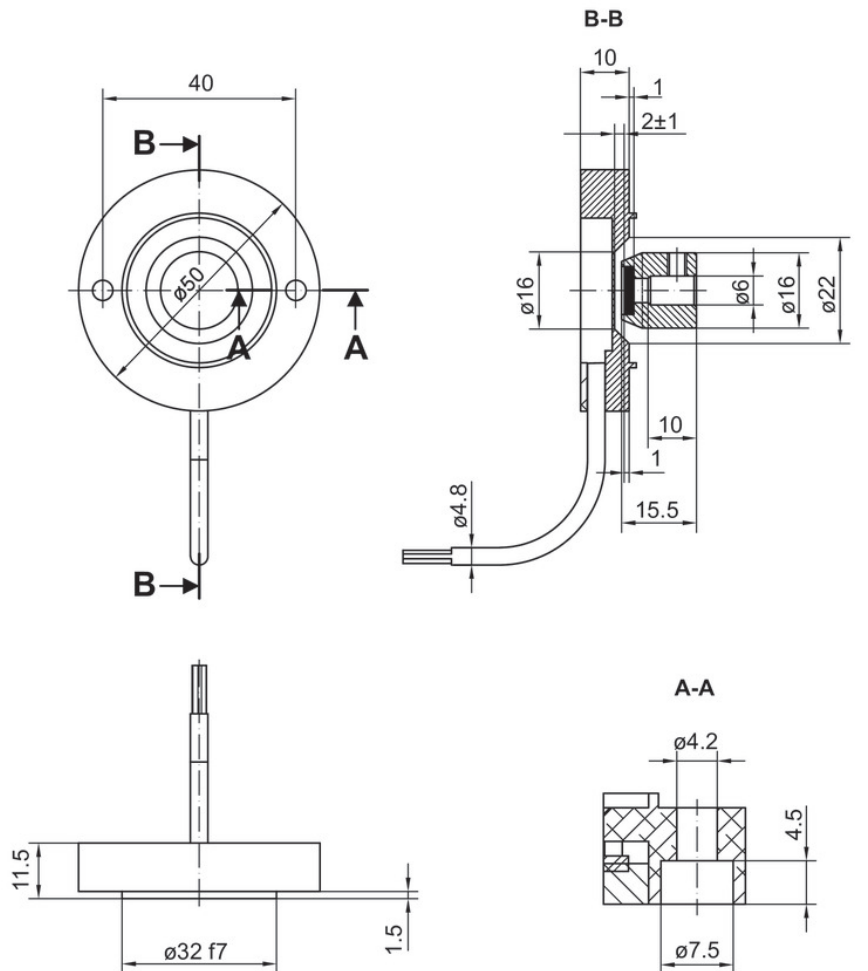


EAM500-K - analog

Magnet rotor bore $\varnothing 6$ mm or M7 screw

Magnetic singleturn encoder kit 12 bit, analog

尺寸



磁转子 · 带 $\varnothing 6$ mm安装孔 (圆柱形)

EAM500-K - analog

Magnet rotor bore ø6 mm or M7 screw

Magnetic singleturn encoder kit 12 bit, analog

订货资料

	EAM500	-	K	M	##	.	7	M	##	.	####	#	.	A
Product	EAM500													
Shaft type														
Kit			K											
Flange (kit)														
Flat mounting flange, ø40 mm				M										
Magnet holder / bore diameter														
ø6 mm					6									
M7 screw					7									
Protection class														
IP 67							7							
Connection⁽¹⁾														
Cable radial, 0.3 m								M						
Voltage supply / interface														
12...30 VDC, current output 4...20 mA									C0					
8...30 VDC, voltage output 0.5...4.5 V redundant									R4					
5 VDC ±10%, voltage output 0.5...4.5 V ratiometric, redundant									R7					
8...30 VDC, voltage output 0.5...+4.5 V									V3					
12...30 VDC, voltage output 0...10 V									V6					
5 VDC ±10%, voltage output 0.5...4.5 V ratiometric									V7					
Measuring range⁽²⁾														
0...30°												A030		
0...60°												A060		
0...180°												A180		
0...270°												A270		
0...360°												A360		
Output characteristics														
One-channel, rising CW													1	
One-channel, rising CCW													2	
Redundant, CH1 rising CW, CH2 rising CCW													3	
Redundant, CH1 rising CCW, CH2 rising CW													4	
Redundant, CH1 rising CW, CH2 rising CW													5	
Redundant, CH1 rising CCW, CH2 rising CCW													6	
Operating temperature														
-40...+85 °C														

(1) 其他电缆长度可定制并根据需求预装德驰 (Deutsch) 或AMP连接器。

(2) 其他测量范围 (每步10°) 可定制。

A

指定的产品特性或功能和技术数据不代表或暗示任何保证。技术参数如有变更，恕不另行通知。