

Overview

- 40 mm
- LED red / green / blue
- NPN
- -10 ... 55 °C
- IP 67



Picture similar



Technical data

General data

Sensing distance Tw	40 mm
Sensor channels	2 (teachable)
Tolerance ranges	5-step teachable (LEDs)
Size of measuring spot	3 mm x 5 mm
Light source	LED red / green / blue
Signal display (Teach)	LED orange
Channel status display	LED yellow per channel
Power on indication	LED green

Electrical data

Response time / release time	< 0.34 ms
Voltage supply range +Vs	10 ... 30 VDC
Power consumption	< 2 W
Output circuit	NPN
Output function	Light operate
Voltage drop Vd	< 1.8 VDC

Electrical data

Output current (per channel)	< 100 mA
Remote Teach-In input	Protocol with return signal through channel 1-output
Sync. input	High active
Level (sync., teach)	high: 2/3 Vs...Vs low: 0 V...1/3 Vs
Short circuit protection	Yes
Reverse polarity protection	Yes

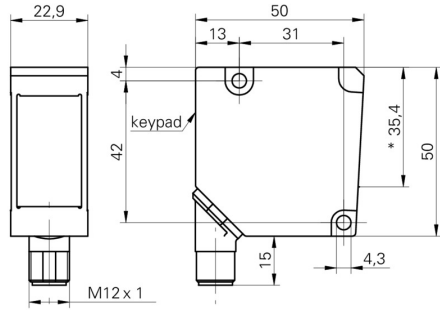
Mechanical data

Width / diameter	22.9 mm
Type	Rectangular
Housing material	Die-cast zinc
Front (optics)	Glass
Device plug	Connector M12, 8 pin, rotatable

Ambient conditions

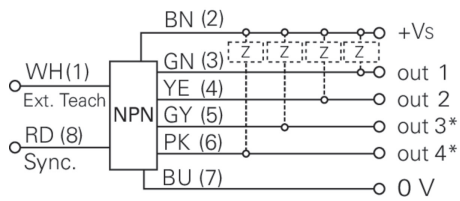
Operating temperature	-10 ... +55 °C
Protection class	IP 67

Dimension drawing



- * emitter axis

Connection diagram



* only in the 4-channel version