

FPDM 16P3921/S14

Retro-reflective sensors - for longer ranges

Article number: 10122958

Overview

- retro-reflective sensor
- 6 m
- pulsed red LED
- PNP
- Teach-in
- connector M12 4 pin
- -25 ... 65 °C
- IP 67



Picture similar



Technical data

General data

Type	Retro-reflective sensor
Version	Transparency object detection
Light source	Pulsed red LED
Actual range Sb	6 m
Nominal range Sn	7.2 m
Polarization filter	Yes
Light indicator	LED yellow
Sensitivity adjustment	Teach-in
Wave length	660 nm

Electrical data

Response time / release time	< 2.5 ms
Adaption time	< 25 ms
Voltage supply range +Vs	10 ... 30 VDC
Current consumption max. (no load)	50 mA
Current consumption typ.	40 mA

Electrical data

Voltage drop Vd	< 1.8 VDC
Output function	Dark operate
Output circuit	PNP
Output current	< 200 mA
Short circuit protection	Yes
Reverse polarity protection	Yes

Mechanical data

Width / diameter	15.4 mm
Height / length	50 mm
Depth	50 mm
Type	Rectangular
Housing material	Die-cast zinc
Front (optics)	PMMA
Connection types	Connector M12 4 pin

Ambient conditions

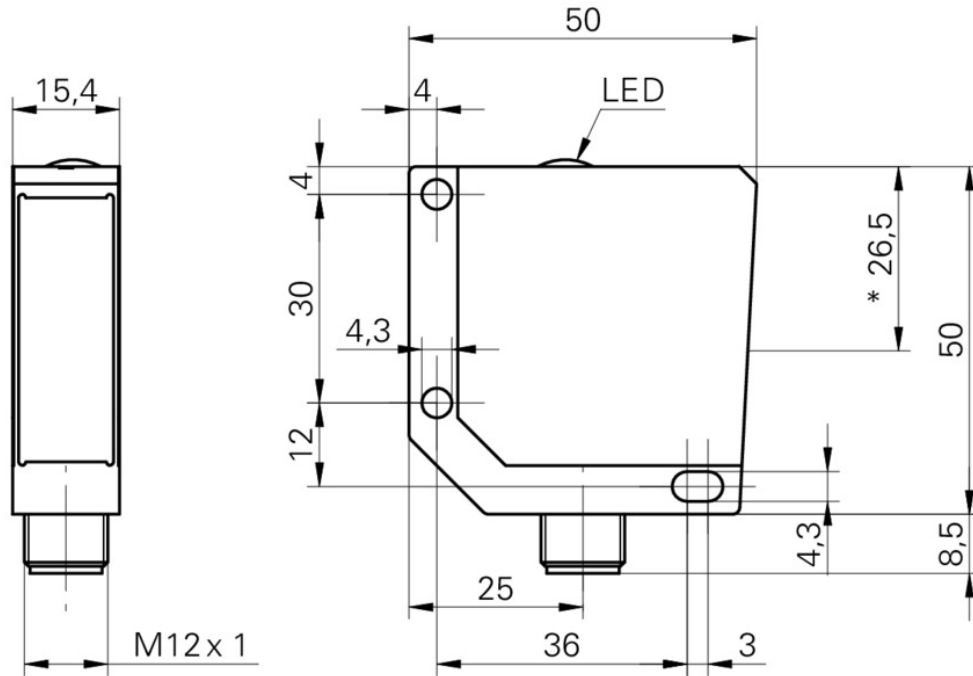
Operating temperature	-25 ... +65 °C
Protection class	IP 67

FPDM 16P3921/S14

Retro-reflective sensors - for longer ranges

Article number: 10122958

Technical drawings



Connection diagram

