

Overview

- Through-beam type
- Actual range up to 160 mm
- Threaded sensing head M4
- Plastic jacket 25 cm long
- Operating temperature up to +70 °C
- For rugged fiber optic sensors FVDM 15



Picture similar

Technical data

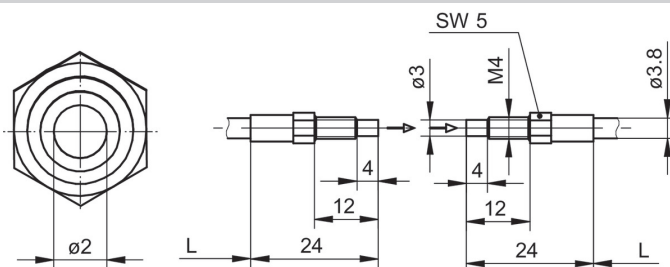
General data

Operating principle	Through-beam type
Actual range Sb	160 mm
Fiber optic head	Cylindrical threaded
Operating temperature	-25 ... +70 °C
Exit angle	60°
Fiber optics can be shortened to length	No
Integrated lens	No
Adaptable lens	Yes
Infrared light compatibility (1450 nm)	Yes
Smallest object recognizable	0.1 mm

Mechanical data

Width / diameter (head)	4 mm
Height / length (head)	24 mm
Material (head)	Brass
Thread	M4 x 0.7
Bending radius (fixed)	12 mm
Bending radius (mobile)	24 mm
Cable jacket diameter	4 mm
Material cable jacket	PVC
Fiber cross section	4 mm ²
Material (fiber optic cable)	Glass
Length (fiber optic cable)	25 cm

Dimension drawing



Accessories**Fitting fiber optic sensors**

10234639	FVDM 15N5103
10122368	FVDM 15N5103/S14
10234520	FVDM 15P5103
10239451	FVDM 15P5103/S14
10234519	FVDM 15P5130
10124952	FVDM 15P5130/S14

Mounting accessories

10103230	Replacement cap nut for fiber optics series 15
----------	--

Lenses and components

10119909	Doubling lens M4 increases the actual range (paires)
----------	--