

# FSF 050A1002

Glass fiber optic cable

Article number: 10210319

## Overview

- Through-beam type
- Actual range up to 450 mm
- Threaded sensing head M4
- Metal jacket 50 cm long
- Operating temperature up to +250 °C
- For rugged fiber optic sensors FZAM 18 and FZAM 30



Picture similar

## Technical data

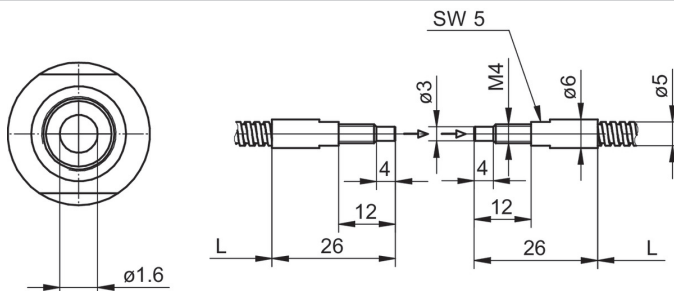
### General data

|   |                      |
|---|----------------------|
| Operating principle                     | Through-beam type    |
| Actual range Sb                         | 450 mm               |
| Fiber optic head                        | Cylindrical threaded |
| Operating temperature                   | -25 ... +250 °C      |
| Exit angle                              | 60°                  |
| Fiber optics can be shortened to length | No                   |
| Integrated lens                         | No                   |
| Adaptable lens                          | Yes                  |
| Infrared light compatibility (1450 nm)  | Yes                  |
| Smallest object recognizable            | 0.1 mm               |

### Mechanical data

|                              |                       |
|------------------------------|-----------------------|
| Width / diameter (head)      | 4 mm                  |
| Height / length (head)       | 26 mm                 |
| Material (head)              | Brass                 |
| Thread                       | M4 x 0.7              |
| Bending radius (fixed)       | 15 mm                 |
| Bending radius (mobile)      | 30 mm                 |
| Cable jacket diameter        | 5 mm                  |
| Material cable jacket        | Brass chromium plated |
| Fiber cross section          | 2 mm <sup>2</sup>     |
| Material (fiber optic cable) | Glass                 |
| Length (fiber optic cable)   | 50 cm                 |

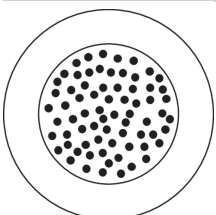
## Dimension drawing



## Actual range diagram

| Sensor                      | Actual Range Sb [mm] |
|-----------------------------|----------------------|
| FZAM 30x5004                | 450                  |
| FZAM 30x5001                | 380                  |
| FZAM 18x1150 & FZAM 18x6460 | 450                  |
| FZAM 18x1155                | 180                  |

## Fiber arrangement



## Accessories

### Fitting fiber optic sensors

|          |                  |
|----------|------------------|
| 10129020 | FZAM 18N1150     |
| 10129021 | FZAM 18N1150/S14 |
| 10129023 | FZAM 18N1155     |
| 10128874 | FZAM 18N6460     |
| 10128875 | FZAM 18N6460/S14 |
| 10127712 | FZAM 18P1150     |
| 10128111 | FZAM 18P1150/S14 |
| 10127711 | FZAM 18P1155     |
| 10128118 | FZAM 18P6460     |
| 10127710 | FZAM 18P6460/S14 |
| 10215060 | FZAM 30N5004     |
| 10214166 | FZAM 30P5001     |
| 10215057 | FZAM 30P5004     |

### Mounting accessories

|          |   |
|----------|---|
| 10102757 | Adapter series 30                               |
| 10101958 | Adjusting plate series 18                       |
| 10101480 | Replacements cap nut for fiber optics series 18 |
| 10102801 | Cap nut for sensors series 30                   |

### Lenses and components

|          |  |
|----------|--|
| 10119909 | Doubling lens M4 increases the actual range (paires) |
|----------|--|