

HOGS 100

Blind hollow shaft $\varnothing 16$ mm or cone shaft $\varnothing 17$ mm (1:10)
720...5000 sinewave cycles per turn

Overview

- Blind hollow shaft $\varnothing 16$ mm or cone shaft $\varnothing 17$ mm (1:10)
- Up to 5000 sinewaves cycles per turn
- Low harmonic content (patented LowHarmonics technology)
- Top-quality SinCos output-signals
- Protection against inductive shaft current
- Large terminal box, turn by 180° or axial terminal cover



HUBNER
BERLIN
A Baumer Brand

Technical data

Technical data - electrical ratings

Voltage supply	5 VDC ± 10 % 9...30 VDC
Consumption w/o load	≤ 90 mA
Sinewave cycles per revolution	720 ... 5000
Phase shift	90 °
Reference signal	Zero pulse, width 90°
Sensing method	Optical
Output signals	K1, K2, K0 + inverted
Output stages	SinCos 1 Vpp
Difference of SinCos amplitude	≤ 20 mV
Harmonics typ.	-50 dB
DC offset	≤ 20 mV
Bandwidth	250 kHz (-3 dB)
Interference immunity	EN 61000-6-2
Emitted interference	EN 61000-6-3
Approval	CE UL approval / E217823

Technical data - mechanical design

Size (flange)	$\varnothing 105$ mm
Shaft type	$\varnothing 16$ mm (blind hollow shaft) $\varnothing 17$ mm (cone shaft 1:10)

Technical data - mechanical design

Admitted shaft load	≤ 250 N axial ≤ 400 N radial
Protection EN 60529	IP 66
Operating speed	≤ 10000 rpm (mechanical)
Operating torque typ.	6 Ncm
Rotor moment of inertia	180 gcm ²
Material	Housing: aluminium die-cast Shaft: stainless steel
Operating temperature	-20...+85 °C
Resistance	IEC 60068-2-6 Vibration 20 g, 10-2000 Hz IEC 60068-2-27 Shock 300 g, 6 ms
Corrosion protection	IEC 60068-2-52 Salt mist for ambient conditions C4 according to ISO 12944-2
Explosion protection	II 3 G Ex ec IIC T4 Gc (gas) II 3 D Ex tc IIIC T135°C Dc (dust) (only with option ATEX)
Connection	Terminal box Terminal cover
Weight approx.	1.8 kg

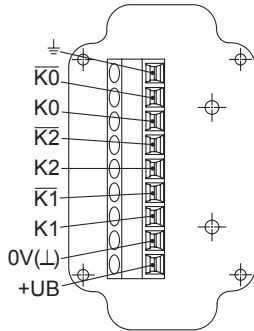
HOGS 100

Blind hollow shaft $\varnothing 16$ mm or cone shaft $\varnothing 17$ mm (1:10)
720...5000 sinewave cycles per turn

Terminal assignment

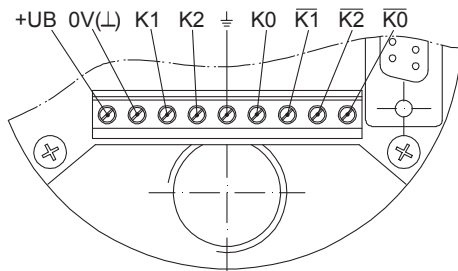
View A (see dimension)

Connecting terminal terminal box, radial



View B (see dimension)

Connecting terminal terminal cover, axial



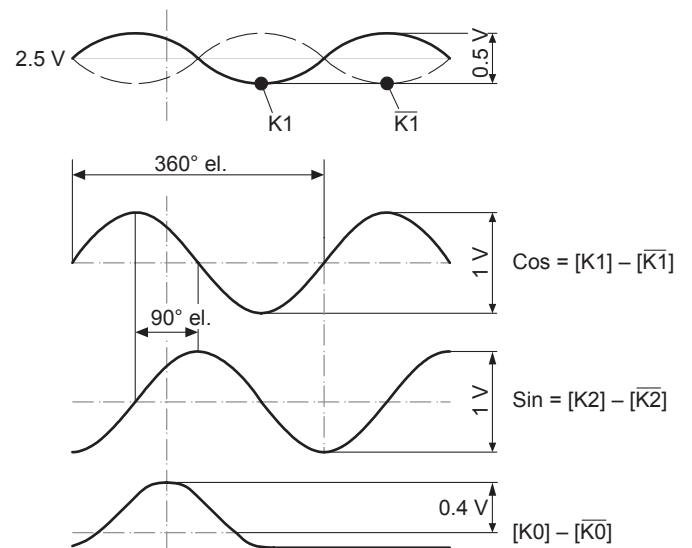
Terminal significance

+UB	Voltage supply
0V (\perp)	Ground
\perp	Earth ground (housing)
K1	Output signal channel 1
$\overline{K1}$	Output signal channel 1 inverted
K2	Output signal channel 2 (offset by 90° to channel 1)
$\overline{K2}$	Output signal channel 2 inverted
K0	Zero pulse (reference signal)
$\overline{K0}$	Zero pulse inverted

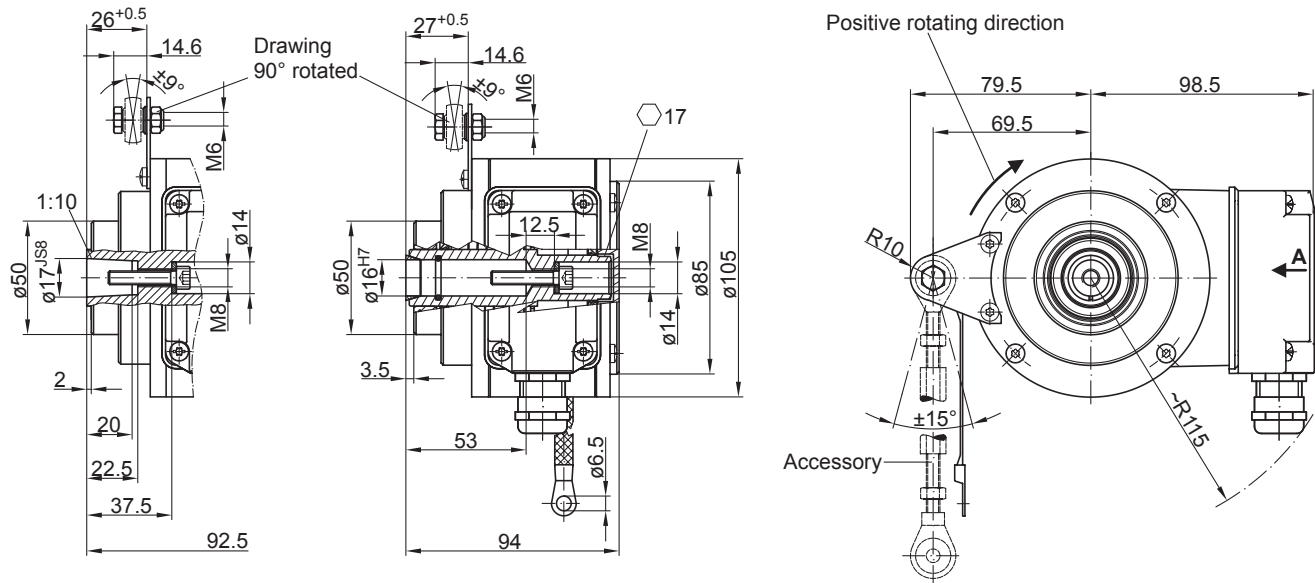
Output signals

SinCos

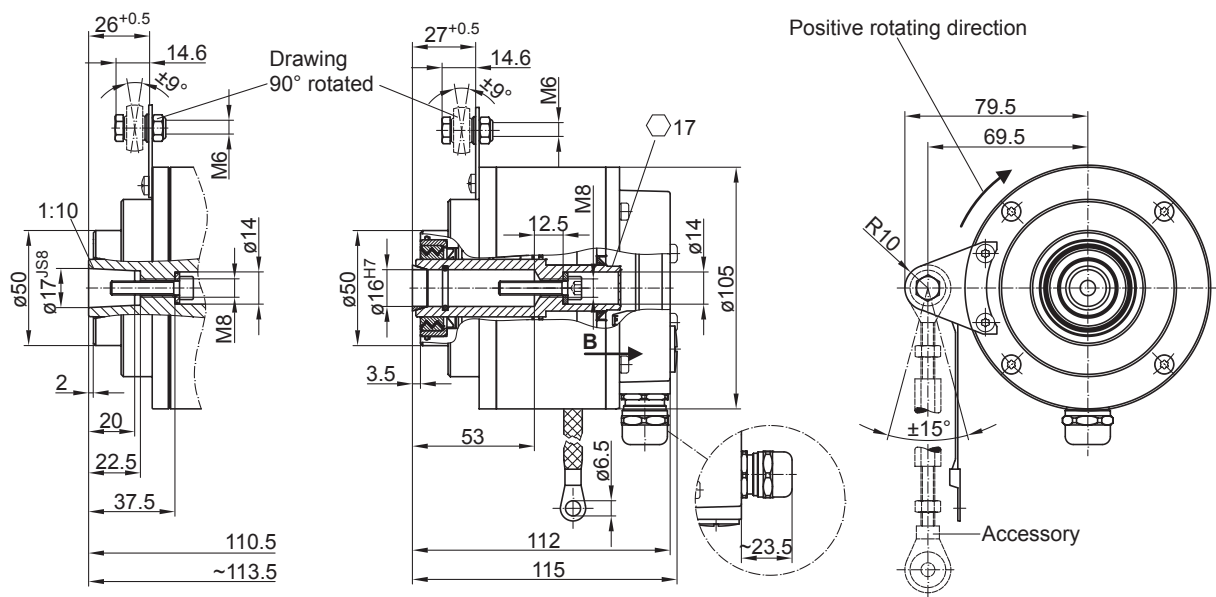
At positive rotating direction (see dimension)



Dimensions



Version with radial terminal box



Version with axial terminal cover

HOGS 100

Blind hollow shaft ø16 mm or cone shaft ø17 mm (1:10)
 720...5000 sinewave cycles per turn

Ordering reference

	HOGS100	DN	####	#	##	#####	#####
Product							
Sine encoder	HOGS100						
Output signals							
K1, K2, K0		DN					
Sinewave cycles							
720			720				
800			800				
1024			1024				
2048			2048				
5000			5000				
Voltage supply							
5 VDC					-		
9...30 VDC					R		
Sealing system							
Dust protection						LR	
Damp protection						SR	
Shaft diameter							
Blind hollow shaft ø16 mm						16H7	
Cone shaft ø17 mm (1:10)						17K	
Connection							
Terminal box, radial							KLK
Terminal cover, axial (not for option M redundant)							KLK-AX

Accessories

Mounting accessories

11043628	Torque arm M6, length 67...70 mm
11004078	Torque arm M6, length 120...130 mm (≥71 mm)
11002915	Torque arm M6, length 425...460 mm (≥131 mm)
11054917	Torque arm M6 insulated, length 67...70 mm
11072795	Torque arm M6 insulated, length 120...130 mm (≥71 mm)
11082677	Torque arm M6 insulated, length 425...460 mm (≥131 mm)

Diagnostic accessories

11075858	Analyzer for encoders HENQ 1100
11075880	Analyzer for encoders HENQ 1100 B