

Helical beam coupling (D1=10 / D2=10)

For encoder with solid shaft

Article number: 11074331

Overview

- Manufactured from one piece
- High torques
- Very high torsional stiffness



Technical data

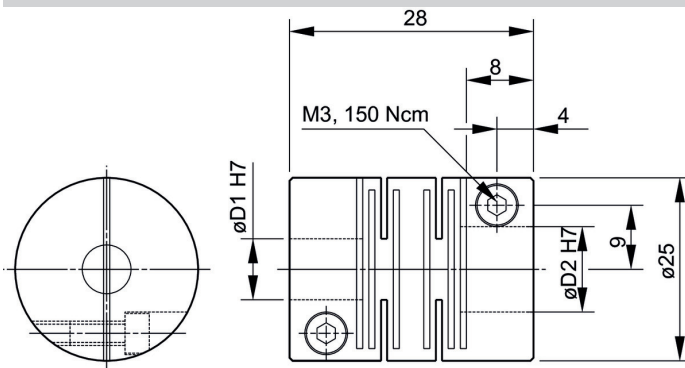
Technical data

Shaft diameter D1	10 mm
Shaft diameter D2	10 mm
Operating speed	≤10000 rpm
Operating temperature	-20...+120 °C
Moment of inertia	23.9 gcm ²
Torsional rigidity	533 Nm/rad

Technical data

Maximum torque	600 Ncm
Admissible axial movement	± 0.1 mm
Admissible parallel misalignment	± 0.1 mm
Admissible angular error	± 1 °
Weight approx.	24 g
Material	Aluminium

Dimensions

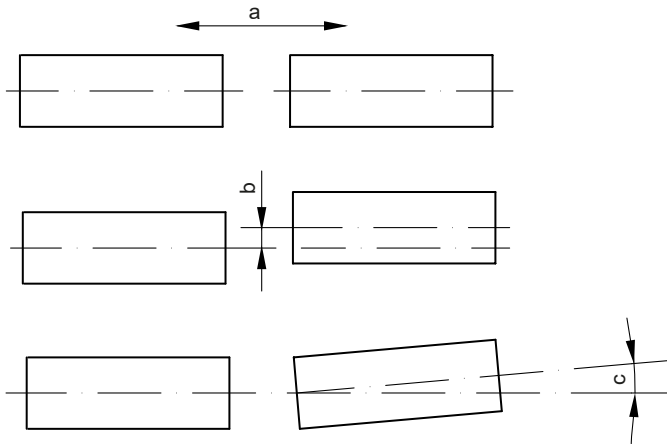


Helical beam coupling (D1=10 / D2=10)

For encoder with solid shaft

Article number: 11074331

Assembly drawing



a = Admissible axial movement
b = Admissible parallel misalignment
c = Admissible angular error