

Overview

- 0 ... 2 mm
- voltage output
- flylead connector M8
- 10 ... 60 °C
- IP 67



Picture similar



Technical data

General data

Mounting type	Quasi-flush
Measuring distance Sd	0 ... 2 mm
Resolution	< 0.001 mm (stat.) < 0.005 mm (dynam.)
Repeat accuracy	0.02 mm
Linearity error	± 100 µm
Temperature drift	± 5 % (Full Scale)

Electrical data

Response time (factory characteristic)	< 1 ms
Voltage supply range +Vs	15 ... 30 VDC
Current consumption max. (no load)	10 mA
Output circuit	Voltage output
Output signal	0 ... 10 VDC
Load resistance	> 3000 Ohm
Short circuit protection	Yes
Reverse polarity protection	Yes

Mechanical data

Design	Rectangular
Material (sensing face)	PBT
Housing material	Die-cast zinc nickel plated
Dimension	8 mm

Mechanical data

Housing length	16 mm
Connection types	Flylead connector M8
Tightening torque max.	0.8 Nm

Ambient conditions

Operating temperature	10 ... +60 °C
Protection class	IP 67

Cable

Head A: Connection	M8
Head A: Gender	Male
Head A: Angle cable outlet	0°
Head A: Coding	A
Head A: No. of poles	3
Head A: Degree of protection	IP65, IP66K, IP67
Cable length	200 mm
Length tolerance	+ 10 % - 0 %
Shielded	No
External sheath: Material	PVC
Cable diameter	2.4 mm
AWG	28
Wire cross section	0.08 mm ²

IWFM 08U9501/KS35

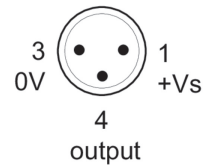
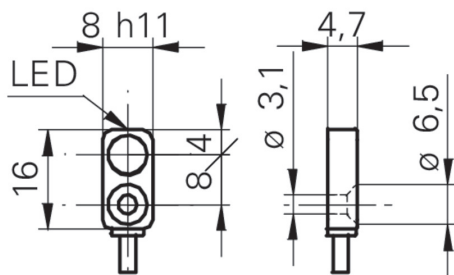
Inductive distance sensors - subminiature

Article number: 11001601

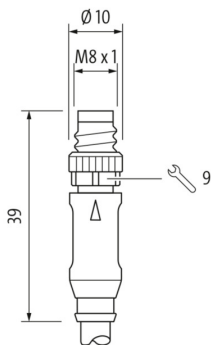
Remarks

- Extra flat housing
- Through bore for M3 screw
- Standard cable length 200 mm (L)

Dimension drawing



Dimensions connector



Connection diagram

