

# Insulating sleeve $\varnothing 12$ mm/ $\varnothing 14$ mm/25 mm long

Article number: 11116923

## Overview

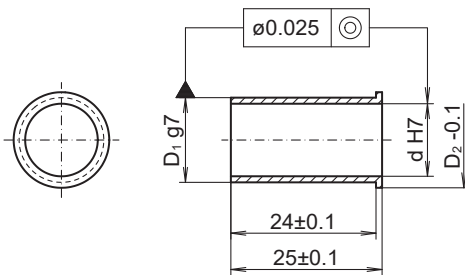
- Insulating sleeve to protect against wave currents
- Suitable for motor shaft diameter 12 mm



## Description

Insulation sleeves reliably protect the encoder against damage by shaft currents. For drive shafts  $\varnothing 12$  mm. Basic product is encoder OptoPulse® EIL580 in hollow shaft design  $\varnothing 14$  mm. Later exchange without any tools. Material: Glass-fiber reinforced plastic

## Dimensions



d H7	D <sub>1</sub> g7	D <sub>2</sub> -0.1
$\varnothing 12$	$\varnothing 14$	$\varnothing 15.8$