

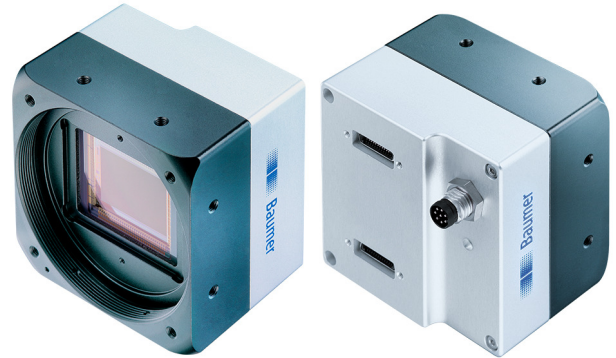
## LXC-200C

Camera Link, 12 Megapixel, Color

Article number: 11148674

### Overview

- 5120 × 3840 px
- ams (CMOSIS) CMV20000
- 35 mm CMOS
- 32 fps
- Camera Link Full



Picture similar



GEN*i*CAM



### Technical data

#### Sensor information

Sensor	ams (CMOSIS) CMV20000
Mono/Color	Color
Color filter	RGB Bayer Mosaic
Sensor type	35 mm CMOS
Shutter type	Global shutter
Resolution	5120 × 3840 px
Pixel size	6.4 × 6.4 μm
Exposure time	0.1 ... 1000 ms

#### Data quality (EMVA 1288 typical)

Dark noise	7.64 e-
Saturation capacity	11673 e-
Dynamic range	63.1 dB
Signal-to-noise ratio	40.7 dB
Quantum efficiency	55.7 % @ 465 nm 60.5 % @ 536 nm 53.9 % @ 631 nm

#### Acquisition formats

Image formats, interface frame rate max.	Full Frame, 5120 × 3840 px, max. 32 fps
Pixel formats	BayerGB8 BayerGB10 BayerGB12

#### Image preprocessing

Analog controls	Gain (0 ... 12 dB) Offset (0 ... 255 LSB 12 Bit)
Color models	Raw Bayer

#### Camera features

Synchronization	free running trigger
Trigger sources	Hardware Software ActionCommand
Trigger delay	0 ... 2 sec, tracking and buffering of up to 256 trigger signals
Sequencer	Automated control for series of images using different sets of parameters
Sequencer parameter	Exposure time gain factor Output ROI Offset x ROI Offset y
Digital inputs	1 input line
Digital outputs	1 output line
Internal image buffer	512 MB

#### Interfaces and connectors

Data interface	Camera Link Full, connector: 2 x Standard SDR26 (Mini CL)
Process interface	M8 / 8 pins
Power supply	via M8 / 8 pins

#### Mechanical data

Lens mount	M58-mount (F-mount, M42, C-mount via adapter)
Width	60 mm
Height	60 mm

# LXC-200C

Camera Link, 12 Megapixel, Color

Article number: 11148674

## Technical data

### Mechanical data

Depth	43.05 mm
Weight	≤ 235 g (M58-mount)
Material	housing: aluminum

### Electrical data

Voltage supply range +Vs	12 ... 24 V DC (external power supply) 38 ... 57 V (PoCL)
Power consumption	Approx. 5.5 W @ 24 VDC Approx. 5.5 W @ 12 VDC (PoCL)

### Non-volatile memory

Flash memory size	128 kB
-------------------	--------

### Environmental conditions

Operating temperature	+5 ... +65 °C @ T = measurement point
Humidity	10 ... 90 % (non-condensing)
Protection class	IP 40

### Conformity

Conformity	CE RoHS EAC KC (R-R-BkR-LXC-200M)
------------	--

## Dimension drawing

