

Totalizers mechanic

Meter counters PTB approved

Display 5 digits, manual reset (zero) by lever

M 310.A



M 310.A - PTB Meter counter

Features

- PTB Meter counter, small
- Adding
- Display 5-digits
- Reset by lever

Technical data - mechanical design

Function	PTB Meter counter
Display	White numbers on black Decimal digits in red
Number of digits	5-digits
Digit height	4.5 mm
Zero setting	Manual by reset lever. Do not let snap or make jerky movements.
PTB approval	1.3 / 90.02
Count mode	Adding in a rotational direction to be indicated, subtracting in reverse direction. 5 revolutions = 100 counts
Drive shaft	Both sides, $\varnothing 4$ mm
Measuring speed	<60 m/min
Measuring accuracy	1 cm
Measuring range	999.99 m/cm
Ambient temperature	0...+60 °C
Housing type	Surface mount housing with mounting plate
Housing colour	Grey
Dimensions W x H x L	69 x 48 x 28 mm
Dimensions mounting plate	80 x 48 mm
Mounting type	Base plate, 6 long mounting holes
Weight approx.	130 g
Materials	Housing: Hostaform POM, grey Base plate: steel zinc-coated

Description

Meter counter M 310.A is calibrated by the German Physical-Technical Institute (PTB) and approved for calibrated measuring systems. However, our customers must apply for calibration of the whole measuring system at the corresponding calibration authorities.

Totalizers mechanic

Meter counters PTB approved

Display 5 digits, manual reset (zero) by lever

M 310.A

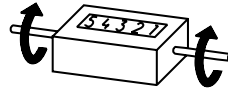
Part number

M 310.A0

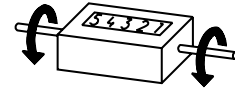
Display / direction of rotation

- 1 5 digits 999.99 m, 5 revolutions
= 100 digits / direction I
- 2 5 digits 999.99 m, 5 revolutions
= 100 digits / direction II

Direction of strokes and rotation



Away from user
Direction of rotation I



Towards user
Direction of rotation II

Accessories

Measuring wheels

MR211.04A Circumf. 20 cm, knurled aluminium

MR241.04D Circumf. 20 cm, smooth Hytrel TPE-E

MR261.04A Circumf. 20 cm, knopped rubber NBR Nitril

MR291.04D Circumf. 20 cm, grooved Hytrel TPE-E

Dimensions

