

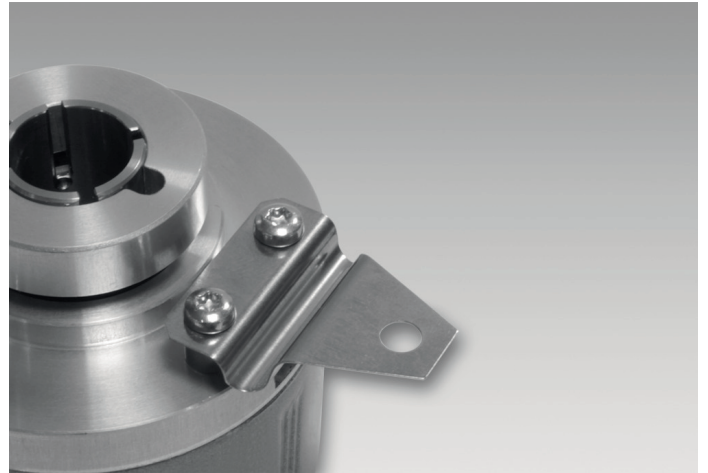
## Mounting kit 003

Torque arm, 1-arm, bolt circle  $\varnothing 82$  mm, mounting M4

Article number: 11066081

### Overview

- For low-dynamic applications and constant movements



### Technical data

#### Technical data - mechanical design

Weight approx. 7 g

### Description

Torque support onto encoder by help of the attached screws. Push encoder onto the drive shaft and mount torque support onto the client side. Fastening clamping ring with clamping ring screw.

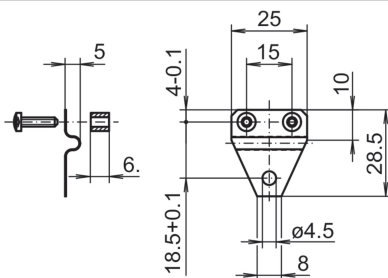
### Scope of delivery

Torque support, two screws M3 x 12 (DIN 7985 - TX10) with two spacers 6 mm

### Suitable for

EIL580-B, EIL580-T, EIL580P-B, EIL580P-T

### Dimensions



### Assembly drawing

