

## Mounting kit 006

Torque arm, 1-arm, bolt circle  $\varnothing 74 \dots 94$  mm, mounting M4/M5

Article number: 11066083

### Overview

- For low-dynamic applications and constant movements



### Technical data

#### Technical data - mechanical design

Weight approx. 7 g

### Description

Torque support onto encoder by help of the attached screws. Push encoder onto the drive shaft and mount torque support onto the client side. Fastening clamping ring with clamping ring screw.

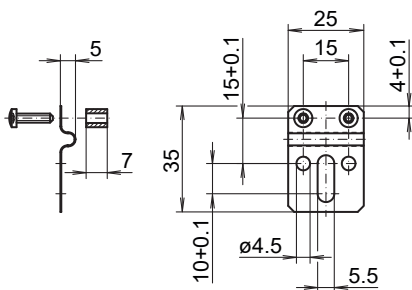
### Scope of delivery

Torque support, two screws M3 x 12 (ISO 14583 - TX10) with two spacers 7 mm

### Suitable for

ATD2AH00, EIL580-B, EIL580-T, EIL580P-B, EIL580P-T, ITD21H00, ITD21H00 HT, ITD22H00

### Dimensions



### Assembly drawing

