

**Overview**

- Outstanding reliability and unrivalled immunity against ambient light
- Easy to adjust via line teach
- Intuitive Xpress Teach / 1-Step Teach method
- Robust housing with stainless steel spacer sleeves



Picture similar



**Technical data**

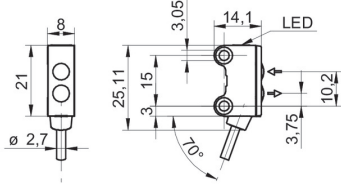
General data		Electrical data	
Type	Background suppression	Current consumption typ.	16 mA (@ 24 VDC)
Sensing distance Tw	15 ... 80 mm	Voltage drop Vd	<2 VDC
Sensing range Tb	7 ... 80 mm	Output function	Dark operate
Smallest object recognizable typ.	0.25 mm at 40 mm	Output circuit	Push-pull
Power on indication	LED green	Output current	50 mA
Alignment / soiled lens indicator	Flashing output indicator	Short circuit protection	Yes
Output indicator	LED yellow	Reverse polarity protection	Yes
Sensing distance adjustment	External Teach-in / 1-Step Teach-in	Mechanical data	
Suppression of reciprocal influence	Yes	Width / diameter	8 mm
Alignment optical axis	< 1,5°	Height / length	25.1 mm
Light Source		Depth	14.1 mm
Light source	Pulsed red LED	Design	Rectangular
Wave length	644 nm	Mechanical mounting	Sleeve smooth (stainless steel)
Electrical data		Housing material	Plastic (ASA, PMMA)
Response time / release time	< 1 ms	Front (optics)	PMMA
Voltage supply range +Vs	10 ... 30 VDC	Connection types	Cable 4 pin, 2 m
Current consumption max. (no load)	20 mA (@ 30 VDC)	Cable characteristics	PVC / PVC 4 x 0.08 mm <sup>2</sup>
		Ambient conditions	
		Protection class	IP 67
		Operating temperature	-25 ... +50 °C

# O200.GR-GD1E.72CV/T007

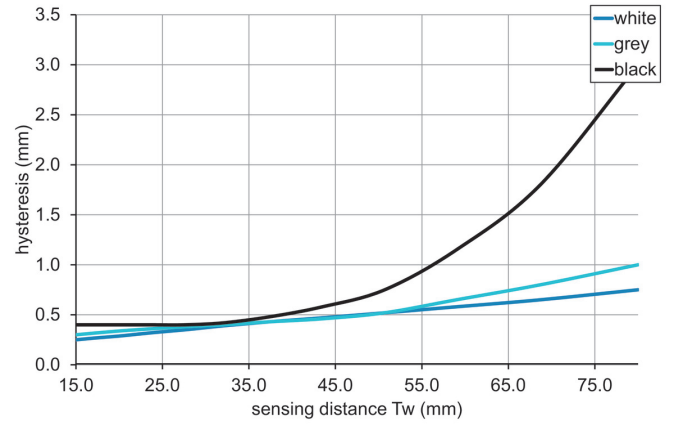
Diffuse sensors with background suppression - miniature

Article number: 11210574

## Dimension drawing



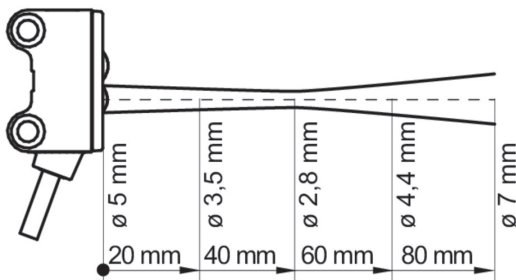
## Hysteresis curve



## Connection diagram



## Beam characteristic (typically)



## Sensing distance diagram

