

Overview

- Outstanding reliability and unrivalled immunity against ambient light
- V-optics for detection of shiny or transparent objects
- Reproducible and color-independent switching distances
- Fixed preset for the simplest commissioning
- Quick mounting by means of M3 threaded bushes made of stainless steel



Picture similar



Technical data

General data

Type	Background suppression
Version	Fixed focus
Sensing distance Tw	15 mm
Sensing range Tb	3 ... 15 mm
Smallest object recognizable typ.	0.05 mm at 10 mm
Power on indication	LED green
Alignment / soiled lens indicator	Flashing output indicator
Output indicator	LED yellow
Sensing distance adjustment	No
Suppression of reciprocal influence	Yes
Alignment optical axis	< 1,5°

Light Source

Light source	Pulsed red LED
Wave length	644 nm

Electrical data

Response time / release time	< 1 ms
Voltage supply range +Vs	10 ... 30 VDC

Electrical data

Current consumption max. (no load)	20 mA (@ 30 VDC)
Current consumption typ.	16 mA (@ 24 VDC)
Voltage drop Vd	<2 VDC
Output function	Light / dark operate
Output circuit	PNP complementary
Output current	50 mA
Short circuit protection	Yes
Reverse polarity protection	Yes

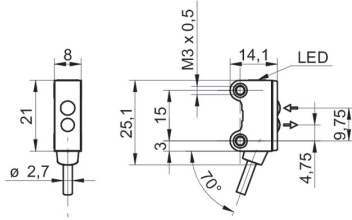
Mechanical data

Width / diameter	8 mm
Height / length	25.1 mm
Depth	14.1 mm
Design	Rectangular
Mechanical mounting	Threaded sleeves M3 (stainless steel)
Housing material	Plastic (ASA, PMMA)
Front (optics)	PMMA
Connection types	Cable 4 pin, 2 m
Cable characteristics	PVC / PVC 4 x 0.08 mm ²

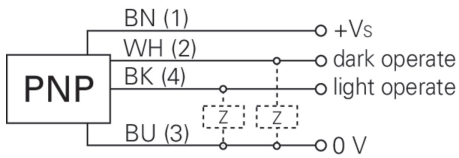
Ambient conditions

Protection class	IP 67
Operating temperature	-25 ... +50 °C

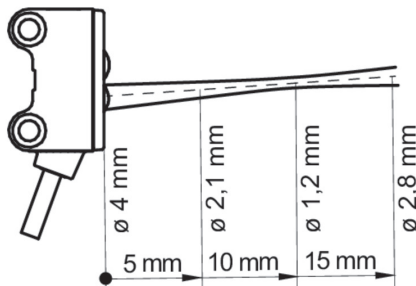
Dimension drawing



Connection diagram



Beam characteristic (typically)



Sensing distance diagram

