

OHDM 16P5001

Diffuse sensors with background suppression - standard

Article number: 10236804

Overview

- background suppression
- 25 ... 300 mm
- pulsed red laser diode
- PNP
- mechanical, 8 turn
- cable 4 pin, 2 m
- -10 ... 50 °C
- IP 67



Picture similar



Technical data

General data

Type	Background suppression
Light source	Pulsed red laser diode
Sensing distance Tw	25 ... 300 mm
Sensing range Tb (at Tw max.)	40 ... 300 mm
Sensing range Tb (at Tw min.)	5 ... 25 mm
Repeat accuracy	< 0.1 mm at laser focus
Output indicator	LED yellow
Sensing distance adjustment	Mechanical, 8 turn
Laser class	2
Distance to focus	80 mm
Wave length	650 nm
Suppression of reciprocal influence	Yes

Electrical data

Response time / release time	< 0.6 ms
Voltage supply range +Vs	10 ... 30 VDC

Electrical data

Current consumption max. (no load)	35 mA
Current consumption typ.	25 mA
Voltage drop Vd	< 2 VDC
Output function	Light / dark operate
Output circuit	PNP
Output current	< 200 mA
Short circuit protection	Yes
Reverse polarity protection	Yes

Mechanical data

Width / diameter	15.4 mm
Height / length	50 mm
Depth	50 mm
Type	Rectangular
Housing material	Die-cast zinc
Front (optics)	Glass
Connection types	Cable 4 pin, 2 m

Ambient conditions

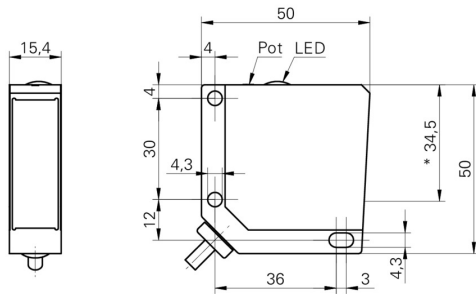
Protection class	IP 67
Operating temperature	-10 ... +50 °C

OHDM 16P5001

Diffuse sensors with background suppression - standard


Article number: 10236804

Dimension drawing



- * emitter axis

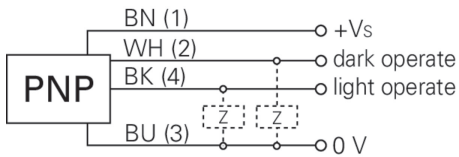
Laser warning



LASER RADIATION
DO NOT STARE INTO BEAM
Wavelength: 640...670nm
IEC 60825-1, Ed. 3, 2014
CLASS 2 LASER PRODUCT

IEC 60825-1/2014 Complies with 21 CFR 1040.10 and 1040.11 except for conformance with IEC 60825-1 Ed. 3., as described in Laser Notice No. 56, dated May 8, 2019

Connection diagram



Beam characteristic (typically)

