

OHDM 16P5012

Diffuse sensors with background suppression - standard

Article number: 10124936

Overview

- background suppression
- 25 ... 300 mm
- pulsed red laser diode
- PNP
- mechanical, 8 turn
- cable 4 pin, 2 m
- -10 ... 50 °C
- IP 67



Picture similar



Technical data

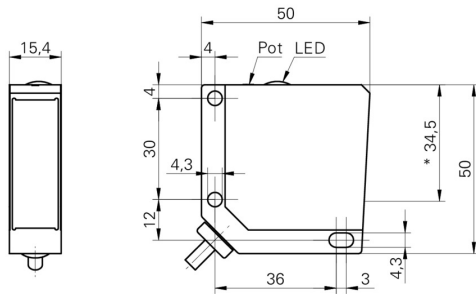
General data		Electrical data	
Type	Background suppression	Current consumption typ.	25 mA
Light source	Pulsed red laser diode	Voltage drop Vd	< 2 VDC
Sensing distance Tw	25 ... 300 mm	Output function	Light / dark operate
Sensing range Tb (at Tw max.)	40 ... 300 mm	Output circuit	PNP
Sensing range Tb (at Tw min.)	5 ... 25 mm	Output current	< 200 mA
Repeat accuracy	< 0,1 mm at laser focus	Short circuit protection	Yes
Output indicator	LED yellow	Reverse polarity protection	Yes
Sensing distance adjustment	Mechanical, 8 turn	Mechanical data	
Laser class	2	Width / diameter	15,4 mm
Distance to focus	60 mm	Height / length	50 mm
Wave length	650 nm	Depth	50 mm
Electrical data		Type	Rectangular
Response time / release time	< 0,1 ms	Housing material	Die-cast zinc
Voltage supply range +Vs	10 ... 30 VDC	Front (optics)	Glass
Current consumption max. (no load)	35 mA	Connection types	Cable 4 pin, 2 m
		Ambient conditions	
		Operating temperature	-10 ... +50 °C
		Protection class	IP 67

OHDM 16P5012

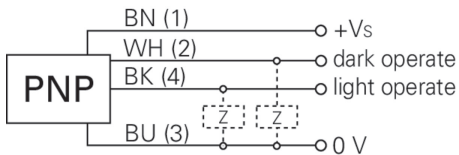
Diffuse sensors with background suppression - standard

Article number: 10124936

Dimension drawing



Connection diagram



Laser warning



LASER RADIATION
DO NOT STARE INTO BEAM
Wavelength: 640...670nm
IEC 60825-1, Ed. 3, 2014
CLASS 2 LASER PRODUCT

IEC 60825-1/2014 Complies with 21 CFR 1040.10 and 1040.11 except for conformance with IEC 60825-1 Ed. 3., as described in Laser Notice No. 56, dated May 8, 2019

Beam characteristic (typically)

