

PP20H - D1 IO-Link

Fully welded pressure sensor with hygienic connection

PP20H-2.#####.D115.##2#2#.000

Preliminary

Overview

- All market typical hygienic connections available
- Resistant to all common CIP cleaning media
- Condensate-proof measuring cell
- Available with IO-Link (in parallel to 4 ... 20 mA)
- Space-saving installations from DN 25 on
- Absolute pressure, relative pressure and vacuum measurement



Technical data

Performance characteristics

Pressure type	Absolute Relative (gauged)
Compensated temperature range	-20 ... 105 °C
Long term stability	≤ 0.2 % FSR/a
Max. measuring error	± 0.5 % FSR ± 1.0 % FSR, 0 ... 0.4 bar Including zero-point and span error, non-linearity (by terminal base line), hysteresis and non-repeatability (EN 61298-2)
Max. measuring span	40 bar
Measuring range	-1 ... 40 bar
Standard error of measurement (BFSL)	± 0.2 % FSR ± 0.5 % FSR, 0 ... 0.4 bar Including non-linearity, hysteresis and non-repeatability according BFSL
Min. measuring span	0.4 bar
Rise time (10 ... 90 %)	≤ 20 ms
Temperature coefficient	≤ 0.2 % FSR/10 K, measuring span ≤ 0.2 % FSR/10 K, zero point

Process conditions

Process temperature	-20 ... 105 °C
Process pressure	Refer to section "Operating conditions"

Process connection

Connection variants	Refer to section "Dimensional drawings"
Wetted parts material	AISI 316L (1.4404)
Wetted parts material, membrane	AISI 316L (1.4435)

Surface roughness (in contact with medium)

Process connection	Ra ≤ 0.8 µm
--------------------	-------------

Ambient conditions

Operating temperature range	-20 ... 50 °C
-----------------------------	---------------

Ambient conditions

Storage temperature range	-40 ... 85 °C
Degree of protection (EN 60529)	IP 67, without connector M12-A, 5-pin IP 69, with appropriate cable
Insulation resistance	> 100 MΩ, 500 V DC
Bump (EN 60068-2-27)	100 g / 2 ms, 4000 impulses per axis and direction
Cold (EN 60068-2-1)	Ab: -40 °C, 2 h (not in operation)
Damp heat, cyclic (EN 60068-2-30)	Db: 55°C, Variant 1, 2 cycles (2 · 24 h)
Shock (EN 60068-2-27)	50 g / 11 ms, 100 g / 6 ms, 10 impulses per axis and direction
Vibration (sinusoidal) (EN 60068-2-6)	1.5 mm p-p (10 ... 58 Hz), 10 g (58 Hz ... 2 kHz), 10 cycles (2.5 h) per axis
Vibration, broad-band random (EN 60068-2-64)	0.1 g ² / Hz, > 10 gRMS (20 Hz ... 1 kHz), 30 min. per axis

Output signal

Current output	4 ... 20 mA, 3-wire
Short circuit protection	Yes
Shunt resistance	Rs ≤ (Vs - 8 V)/0.02 A

IO-Link interface

IO-Link version	1.1
Device profile	Smart Sensor Profile
IO-Link port type	Class A
Baud rate	38,4 kbaud (COM2)
SIO-mode	Yes
Process data (cyclic)	Pressure or temperature Switch state State of alert Scaling factor

PP20H - D1 IO-Link

Fully welded pressure sensor with hygienic connection

PP20H-2.#####.D115.##2#2#.000

Preliminary

Technical data

IO-Link interface

Diagnostic data (acyclic) Ambient pressure
Device temperature
CPU temperature
Operation time (since power-on)
Device Status

Adjustable data (acyclic) Offset settings
Switch parameters
Measuring mode

Dual Channel IO-Link / Analogue
Analogue / SIO Mode

Housing

Style Compact transmitter
Overall size Refer to section "Dimensional drawings"
Material AISI 316L (1.4404)

Electrical connection

Connector M12-A, 5-pin, stainless steel, IO-Link output

Power supply

Voltage supply range 12 ... 30 V DC , with 4 ... 20 mA output signal
18 ... 30 V DC , with IO-Link

Reverse polarity protection Yes

Compliance and approvals

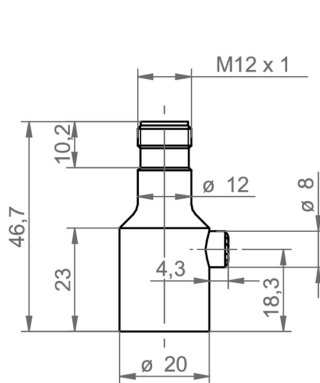
EMC EN 61000-6-2
EN 61000-6-3
EN 61326-2-3

Operating conditions

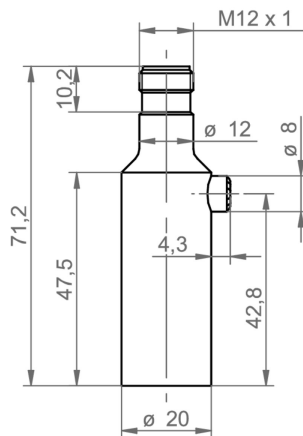
Measuring range (bar)				Proof pressure (bar)	Burst Pressure (bar)
-1 ... 0	-1 ... 1	0 ... 0.4	0 ... 1	5	10
-1 ... 3	-1 ... 5	0 ... 2.5	0 ... 4	10	20
	-1 ... 9	0 ... 6	0 ... 10	20	40
	0 ... 25			50	100
	0 ... 40			80	160

Dimensional drawings (mm)

Housing



Short housing with connector M12-A



Long Housing with connector M12-A

PP20H - D1 IO-Link

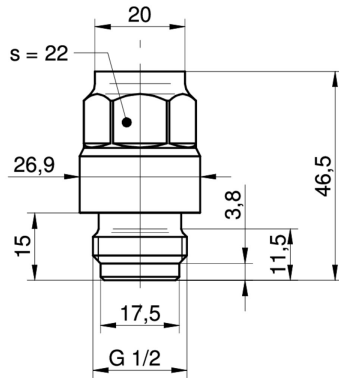
Fully welded pressure sensor with hygienic connection

PP20H-2.#####.D115.##2#2#.000

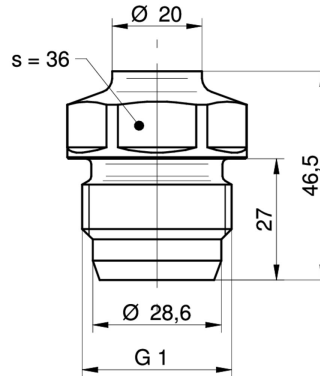
Preliminary

Dimensional drawings (mm)

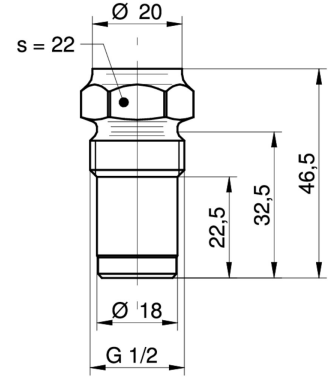
Process connection



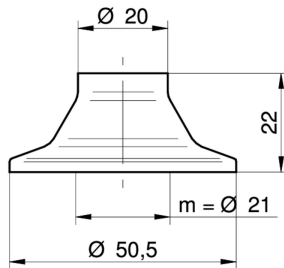
G51-41
G 1/2 A DIN 3852-E (BCID: G51)



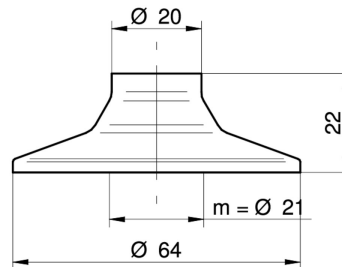
A04-44
G 1 A hygienic (BCID: A04)



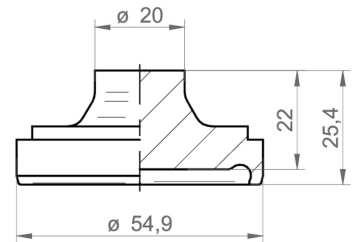
A03-48
G 1/2 A hygienic (BCID: A03)



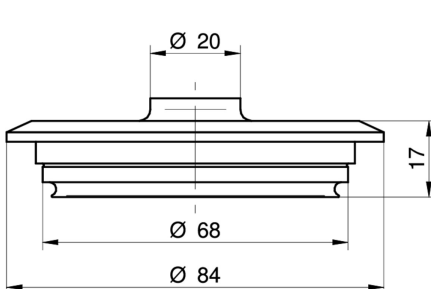
C03-53
Tri-Clamp Ø 50.5 (BCID: C03)



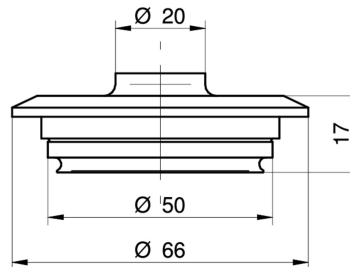
C05-54
Tri-Clamp Ø 64.0 (BCID: C05)



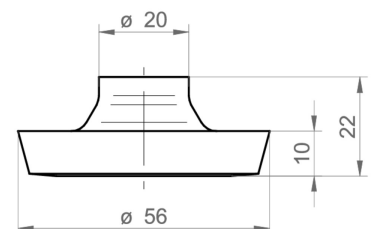
H03-59
DIN 11864-1-A (aseptic screwed union), DN 40 (BCID: H03)



V02-61
Varivent® DN 32 ... 125; 1 1/2" ... 6" (Type N), Ø 68 (BCID: V02)



V01-62
Varivent® DN 25; 1" (Type F), Ø 50 (BCID: V01)



D03-65
DIN 11851 (dairy pipe connection), DN 40 (BCID: D03)

PP20H - D1 IO-Link

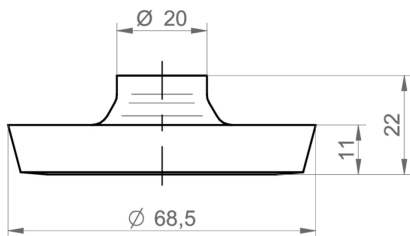
Fully welded pressure sensor with hygienic connection

PP20H-2.#####.D115.##2#2#.000

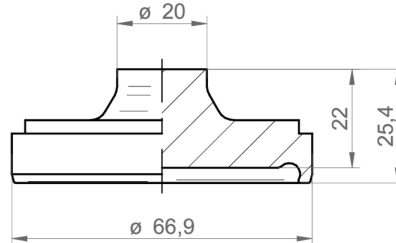
Preliminary

Dimensional drawings (mm)

Process connection



D04-66
DIN 11851 (dairy pipe connection), DN 50
(BCID: D04)



H04-68
DIN 11864-1-A (aseptic screwed union), DN 50
(BCID: H04)

Electrical connection

Output signal	Equivalent circuit	Electrical connection	Function	Pin assignment
4 ... 20 mA (2-wire)			+Vs	1
			Iout	3
			Frame Ground	Plug thread
			n.c.	2, 4
IO-Link (3-wire)			+Vs	1
			GND (0 V)	3
			SW1, IO-Link	4
			Iout	2
			Frame Ground	Plug thread
			n.c.	5

Ordering information

Ordering key - Configuration possibilities see website

	PP20H	-	2	.	#	###	#	.	D1	15	.	##	#	0	2	0	.	0	0	0
Product	PP20H																			
Housing material																				
Stainless steel 1.4404 AISI 316L			2																	
Accuracy																				
±1.0 % FS																			1	
±0.5 % FS																			3	

PP20H - D1 IO-Link

Fully welded pressure sensor with hygienic connection

PP20H-2.#####.D115.##2#2#.000

Preliminary

Ordering information

Ordering key - Configuration possibilities see website

	PP20H	-	2	.	#	###	#	.	D1	15	.	##	#	0	2	0	.	0	0	0
Measuring range																				
0 ... 0.4 bar (EN)							B11													
0...1 bar (EN)							B15													
0 ... 2.5 bar (EN)							B18													
0 ... 4 bar (EN)							B19													
0 ... 6 bar (EN)							B20													
0 ... 10 bar (EN)							B22													
0 ... 16 bar (EN)							B24													
0...25 bar (EN)							B26													
0 ... 40 bar (EN)							B27													
-1...0 bar (EN)							B59													
-1...1 bar (EN)							B73													
-1...3 bar (EN)							B76													
-1...5 bar (EN)							B77													
-1...9 bar (EN)							B79													
0...5 bar (EN)							B98													
Kind of pressure																				
Relative (gauged)							R													
Absolute							A													
Output signal																				
IO-Link Dual Ch., 4 ... 20 mA V1									D1											
Output Connection																				
M12-A, 5-pin										15										
Process connection																				
G 1/2 A DIN 3852-E (G51) ⁽²⁾															41					
G 1 A hygienic (A04) ⁽²⁾															44					
G 1/2 A hygienic (A03) ⁽²⁾															48					
ISO 2852 (Tri-Clamp), DN 25, Ø 50.5 (C03) ⁽¹⁾															53					
ISO 2852 (Tri-Clamp), DN 40; 51, Ø 64.0 (C05) ⁽¹⁾															54					
Varivent® DN 32 ... 125; 1 1/2 ... 6 (Type N), Ø 68 (V02) ⁽³⁾															61					
Varivent® DN 25; 1 (Type F), Ø 50 (V01) ⁽⁴⁾															62					
DIN 11864-1-A (aseptic screwed union), DN 50 (H04) ⁽¹⁾															68					
DIN 11864-1-A (aseptic screwed union), DN 40 (H03) ⁽³⁾															59					
DIN 11851 (dairy pipe connection), DN 40 (D03) ⁽¹⁾															65					
DIN 11851 (dairy pipe connection), DN 50 (D04) ⁽¹⁾															66					
Process connection material																				
Stainless steel 1.4404 AISI 316L															2					
Stainless steel 1.4404 Ra0.4															3					
Seal																				
None																0				
Oil filling																				
NSF H1 listed (FDA approved)																2				
Display																				
Without display																	0			
ATEX																				
Standard safety																		0		
Approvals																				
Standard approvals																			0	
Technology																				
Silicon																				0

PP20H - D1 IO-Link

Fully welded pressure sensor with hygienic connection

PP20H-2.#####.D115.##2#2#.000

Preliminary

Ordering information

Ordering key - Configuration possibilities see website

- (1) EHEDG only with special gasket
- (2) EHEDG not included
- (3) EHEDG included
- (4) EHEDG not included, only for tank installation