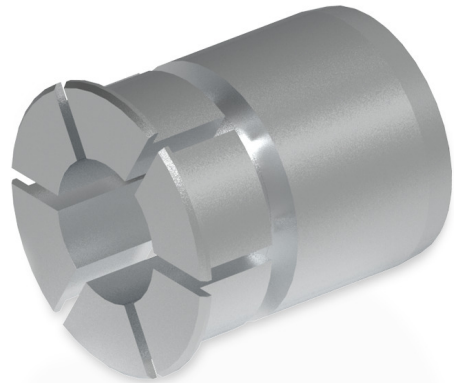


## Reducer insert $\varnothing 25/14.0$ mm

Article number: 11095286

### Overview

- Easy assembly by plugging in
- Exchange possible without tools
- Quick adjustment of the required diameter
- Suitable for high speeds



### Technical data

#### Technical data

Shaft diameter D1	25 mm
Shaft diameter D2	14 mm

#### Technical data

Weight approx.	26 g
Material	Aluminium

### Description

- Allows the mounting on diameter 14 mm on the motor shaft. Basis for the reducer insert is a hollow shaft diameter of 25 mm. Subsequent replacement without tools. Outer diameter: 25 mm Material: Aluminium

### Dimensions

