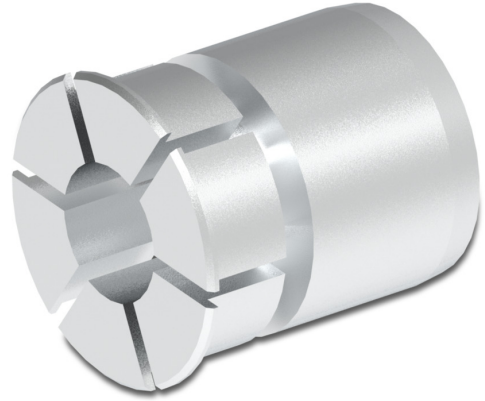


Reducer insert HS35 $\varnothing 0.50''$ ($\varnothing 12.7$ mm)

Article number: 11078636

Overview

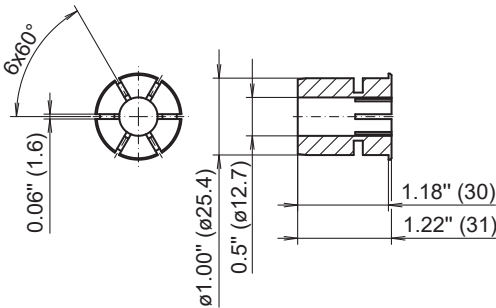
- Easy assembly by plugging in
- Exchange possible without tools
- Quick adjustment of the required diameter
- Suitable for high speeds



Description

Allows the mounting on diameter $\varnothing 0.50''$ ($\varnothing 12.7$ mm) on the motor shaft. Basis for the reducer insert is a hollow shaft diameter of 25.4 mm. Subsequent replacement without tools. Outer diameter: 25.4 mm, Material: Aluminium

Dimensions



\varnothing nominal dimension		tolerance		
inch (in ")	metric (in mm)		inch (in 1/1000")	metric (in μ m)
0.500"	12.700	G7	+0.94 +0.24	+24 +6