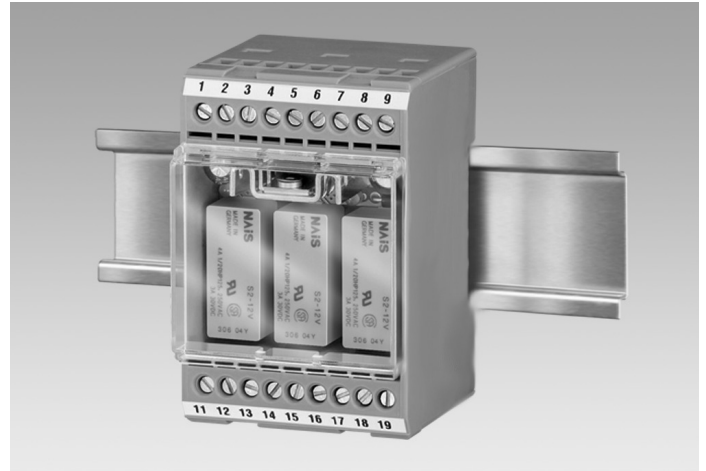


## Overview

Switch relay box for switching high voltages and currents for a digital speed switch (for example DSL or DS 93). Triggering is carried out by the three line drivers.



## Technical data

### Technical data

Dimensions W x H x L	50 x 75 x 55 mm
Cable length	<200 m (1 mm² shielded)
Operating temperature	-20...+50 °C
Protection EN 60529	IP 20

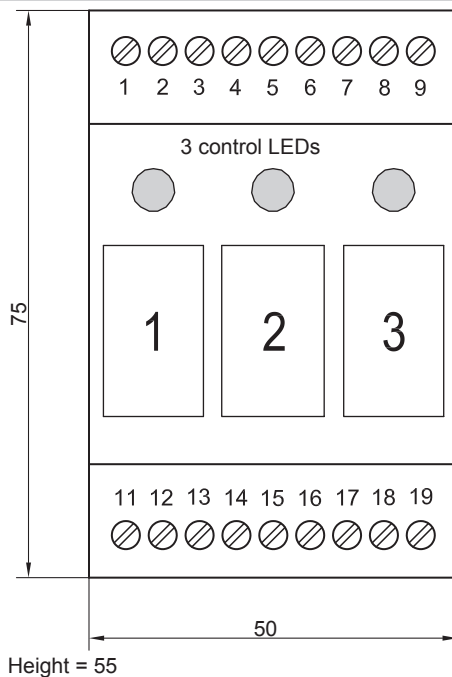
### Technical data

Connection	Connecting terminal
Weight approx.	130 g
Material	Housing: Polycarbonate
Approval	CE

## Suitable for

DS 93, HOG 10 - DSL, HOG 16 + DSL, HOG 165 + DSL, HOG 86 + DSL, POG 10 + DSL

## Dimensions



## Circuit diagram

