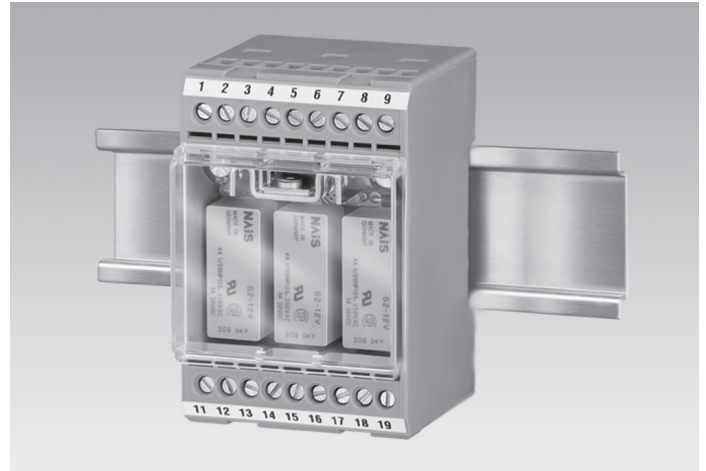


Overview

- Switch relay box for switching high voltages and currents for the electrical speed switch ES(L) 93
- Triggering is carried out by the transistor outputs of the ES(L) 93
- The ES 93 R also conditions an externally supplied AC or DC low voltage



Technical data

Technical data

Dimensions W x H x L	50 x 75 x 55 mm
Voltage supply	15...26 VDC
Cable length	<200 m (1 mm ² shielded)
Operating temperature	-20...+50 °C

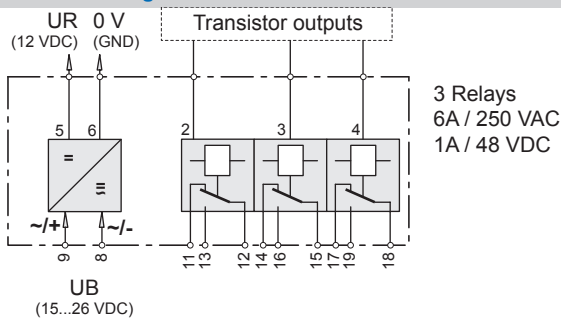
Technical data

Connection	Connecting terminal
Weight approx.	130 g
Protection DIN EN 60529	IP 20
Material	Housing: Polycarbonate
Approval	CE

Suitable for

ES 93, HOG 10 + ESL 93, HOG 11 + ESL 93, POG 9 + ESL 93, POG 10 + ESL 93, POG 11 + ESL 93, POG 90 + ESL 93

Terminal assignment



Dimensions

