

Spiral coupling (D1=12 / D2=12)

For encoder with solid shaft

Article number: 10111102

Overview

- Material: Stainless steel
- 12 mm shaft pin with M4 thread



Technical data

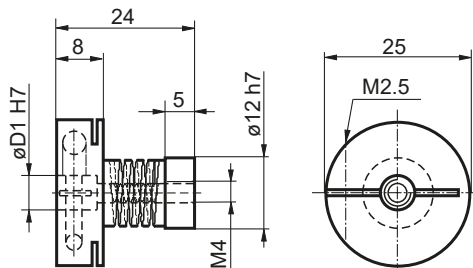
Technical data

Shaft diameter D1	12 mm
Shaft diameter D2	12 mm shaft pin + M4 thread
Operating speed	≤10000 rpm
Operating temperature	Max. 100 °C
Maximum torque	160 Ncm

Technical data

Admissible axial movement	± 0.2 mm
Admissible parallel misalignment	± 0.2 mm
Admissible angular error	1 °
Weight approx.	43 g
Material	Stainless steel

Dimensions

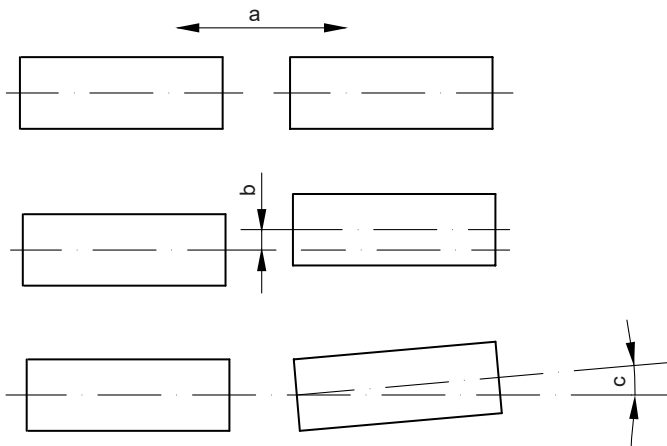


Spiral coupling (D1=12 / D2=12)

For encoder with solid shaft

Article number: 10111102

Assembly drawing



a = Admissible axial movement
b = Admissible parallel misalignment
c = Admissible angular error