

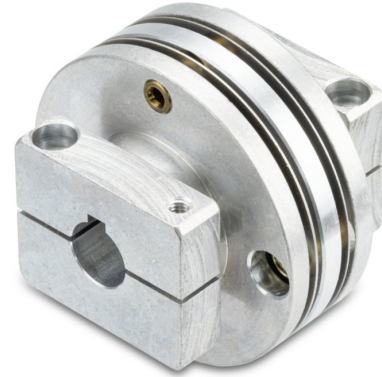
Spring disk coupling K60 WD 11PF4 + 12PF4

For encoder with solid shaft

Article number: 11064874

Overview

- High quality torsionally stiff and backlash free coupling
- Compensating of mounting errors
- Balanced torsional rigidity (torsional spring constant)
- Form-fit connection thanks to keyway



Technical data

Technical data

Shaft diameter D1	11 mm
Shaft diameter D2	12 mm
Keyway D1	4 mm
Keyway D2	4 mm
Operating speed	≤12000 rpm
Moment of inertia	$685 \cdot 10^{-3} \text{ kgcm}^2$
Torsional rigidity	3600 Nm/rad
Operating torque	≤18 Ncm

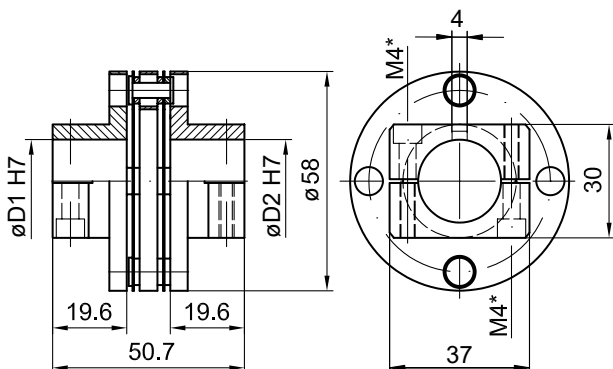
Technical data

Maximum torque	34 Nm
Admissible axial movement	± 0.7 mm
Admissible parallel misalignment	± 0.1 mm
Admissible angular error	± 1 °
Electrical insulation	No
Weight approx.	165 g
Material	Spring disks: X12 CrNi 17 7

Description

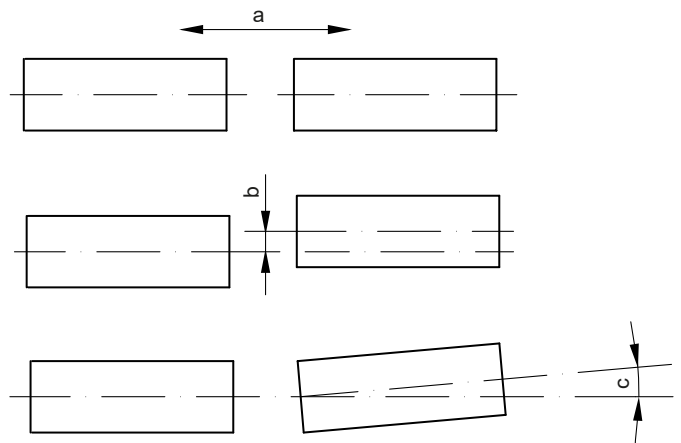
Spring disk coupling, which combines the necessary torsional stiffness with the ability to compensate for axial displacement which occurs especially through heat expansion of the drive and the play backlash of the ball bearings.

Dimensions



* Max. tightening torque:
Mt = 1.5 Nm (plastic side)
Mt = 2-3 Nm (metal side)

Assembly drawing



a = Admissible axial movement
b = Admissible parallel misalignment
c = Admissible angular error