

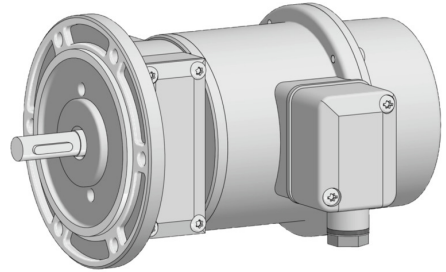
TDPZ0,2 LT-4 B10 55

Solid shaft with EURO flange B10 and own bearings

Article number: 11070726

Overview

- Open circuit voltage 2 x 60 mV per rpm
- Redundant output (TDPZ)
- EURO flange B10
- LongLife commutator thanks to silver track with constantly low contact resistance for high signal quality
- Specially adapted brushes for maintenance-free operation and long service life
- Wide adjustable speed range
- Low response time
- Very high resistance to shock



Picture similar



HUBNER
BERLIN
A Baumer Brand

Technical data

Technical data - electrical ratings

| | |
|--------------------------------|--|
| Reversal tolerance | ≤0.1 % |
| Linearity tolerance | ≤0.15 % |
| Temperature coefficient | ± 0.05 %/K (open-circuit) |
| Isolation class | B |
| Calibration tolerance | ±1 % |
| Climatic test | Humid heat, constant (IEC 60068-2-3, Ca) |
| Performance | 2x 3 W (speed ≥3000 rpm) |
| Armature-circuit time-constant | <40 µs |
| Open-circuit voltage | 60 mV per rpm |
| Interference immunity | EN 61000-6-2 |
| Emitted interference | EN 61000-6-3 |
| Approval | CE CSA |

Technical data - mechanical design

| | |
|---------------|---------|
| Size (flange) | ø115 mm |
|---------------|---------|

Technical data - mechanical design

| | |
|-------------------------|--|
| Shaft type | ø11 mm solid shaft (with key) |
| Flange | EURO flange B10 |
| Protection EN 60529 | IP 55 |
| Operating speed | ≤10000 rpm |
| Torque | 1.5 Ncm |
| Rotor moment of inertia | 1.2 kgcm ² |
| Admitted shaft load | ≤60 N axial ≤80 N radial |
| Material | Housing: aluminium die-cast Shaft: stainless steel |
| Operating temperature | -30...+130 °C |
| Resistance | IEC 60068-2-6 Vibration 10 g, 10-2000 Hz IEC 60068-2-27 Shock 300 g, 1 ms |
| Weight approx. | 2.9 kg |
| Connection | Terminal box |

Optional

- Marine air protected/tropicalized
- Second shaft end (B14)

TDPZ0,2 LT-4 B10 55

Solid shaft with EURO flange B10 and own bearings

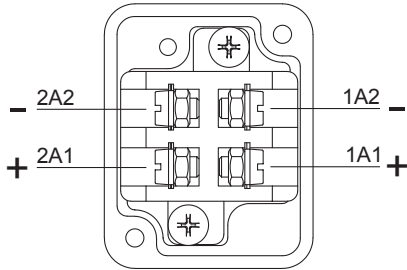
Article number: 11070726

Terminal assignment

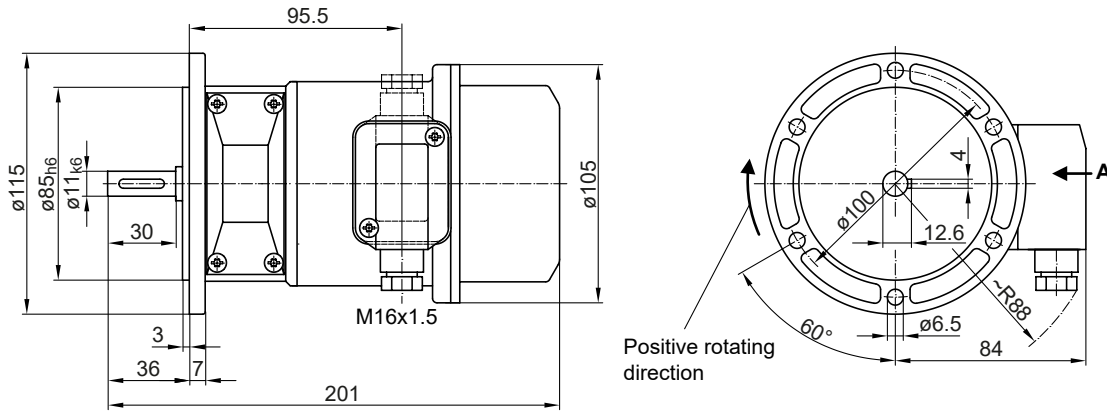
View A (see dimension)

Connecting terminal twin tachogenerator TDPZ

Polarity for positive rotating direction



Dimensions



TDPZ0,2 LT-4 B10 55

Solid shaft with EURO flange B10 and own bearings

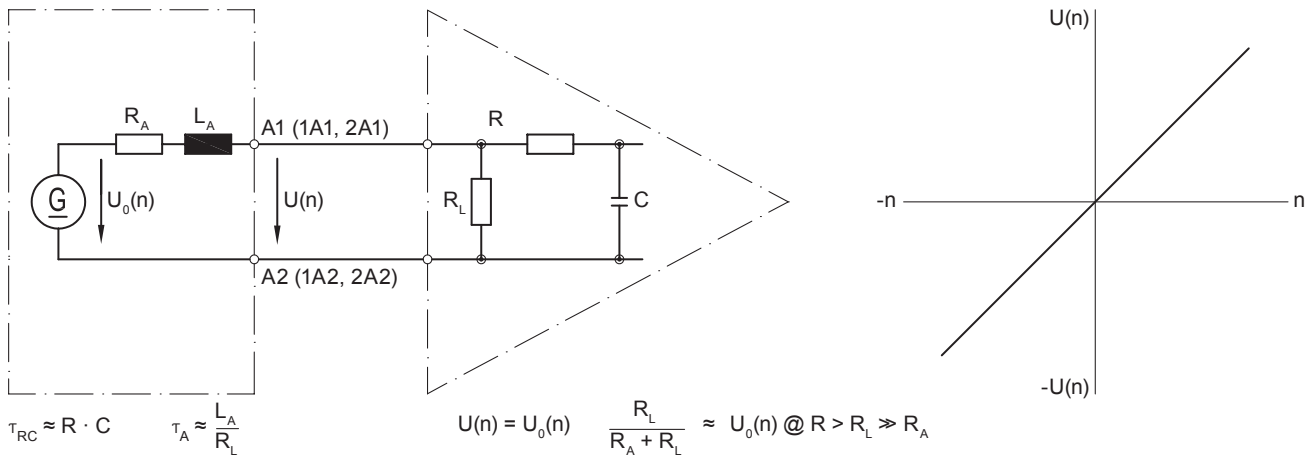
Article number: 11070726

Data according to type

| Type | Open-circuit voltage | Minimum load required depending on speed range [rpm] | | | Maximum operating speed | Armature resistance | Armature inductance |
|---|----------------------|--|-------------------------------|-------------------------------------|-------------------------|---------------------------|---------------------|
| | U_0 [mV/rpm] | 0-3000 R_L [k Ω] | 0-6000 R_L [k Ω] | 0- n_{max} R_L [k Ω] | n_{max} [rpm] | R_A (20°C) [Ω] | L_A [mH] |
| TDPZ0,2 LT-4 | 60 | ≥ 11 | ≥ 44 | ≥ 120 | 10000 | 160 | 390 |
| Superimposed ripple (for $\tau_{RC} = 0.7$ ms): | | $\leq 0.5\%$ (peak-peak) | | $\leq 0.2\%$ (rms) | | | |

Equivalent circuit diagram

Tachogenerator



Polarity for positive rotating direction (see dimension) / A1 (1A1, 2A1): + (VDE) / A2 (1A2, 2A2): - (VDE)

Accessories

Mounting accessories

- Spring disk coupling K 35 (shaft $\varnothing 6 \dots 12$ mm)
- Spring disk coupling K 50 (shaft $\varnothing 11 \dots 16$ mm)
- Spring disk coupling K 60 (shaft $\varnothing 11 \dots 22$ mm)

Spare parts

- | | |
|----------|----------------------------|
| 11248748 | Maintenance kit for TDP0,2 |
|----------|----------------------------|