

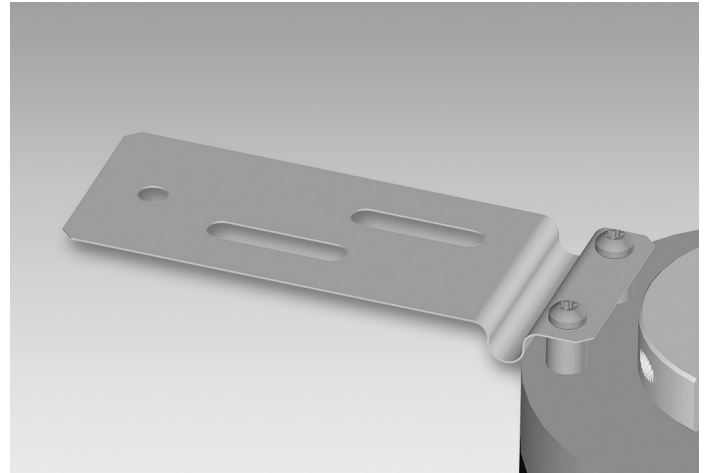
## Torque arm, 1-arm (mounting kit 098)

Bolt circle  $\varnothing 105 \dots 196$  mm, mounting M4

Article number: 11095284

### Overview

- Universal mounting option by several pitch diameters.



### Technical data

#### Technical data - mechanical design

Weight approx. 50 g

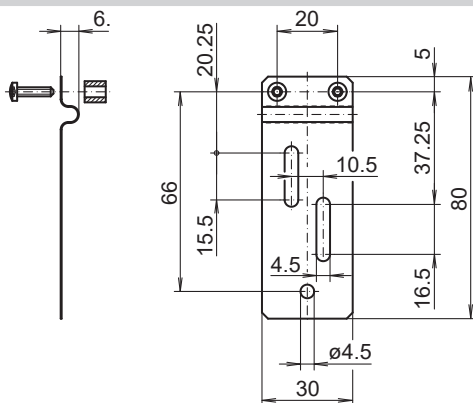
### Description

Torque support onto encoder by help of the attached screws. Push encoder onto the drive shaft and mount torque support onto the client side. Fastening clamping ring with clamping ring screw.

### Scope of delivery

Torque support, two screws M3 x 12 (ISO 14583 - TX10) with two spacers 7 mm

### Dimensions



### Assembly drawing

