

Overview

- Revolution counter
- Adding
- Display 7-digits
- Reset by key



Technical data

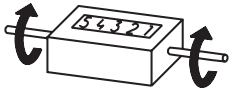
Technical data - mechanical design

Function	Revolution counter
Display	White numbers on black
Number of digits	7-digits
Digit height	7 mm
Zero setting	Key reset by detachable key either at left or right shaft.
Count mode	Adding in a rotational direction to be indicated, subtracting in reverse direction or always adding. 1 rev. = 1 count
Drive shaft	Both sides, $\varnothing 7$ mm
Operating speed	≤ 1000 rpm

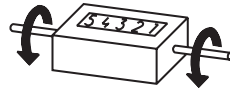
Technical data - mechanical design

Measuring range	9 999 999
Ambient temperature	0...+60 °C
Housing type	Surface mount housing with mounting plate
Housing colour	Grey
Dimensions W x H x L	106 x 64 x 45 mm
Dimensions mounting plate	120 x 64 mm
Mounting type	Base plate, 4 long mounting holes
Weight approx.	350 g
Material	Housing: Hostaform POM, grey Base plate: steel zinc-coated

Direction of strokes and rotation

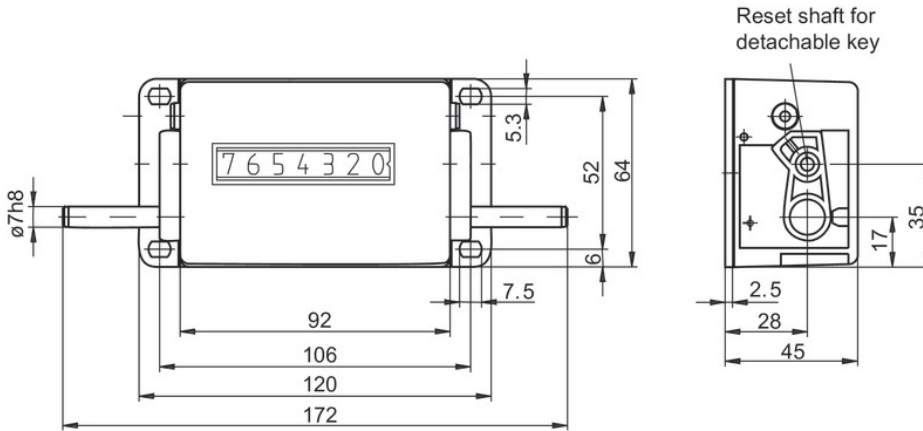


Away from user
Direction of rotation or
stroke direction I



Towards user
Direction of rotation or
stroke direction II

Dimensions



Ordering reference

	U 400.	###	A	02	#
Product	U 400.				
Count mode					
Adding in a rotational direction to be indicated, subtracting in reverse direction only first digit down to 0		010			
Adding - subtracting		020			
Housing					
Grey, cable 0.3 m / without precontact / mounting plate 60 x 62 mm			A		
Count mode / drive					
1 revolution = 1 digit / drive shaft on the right				02	
Display / direction of rotation					
7-digits 9999999 / I					C
7-digits 9999999 / II					D