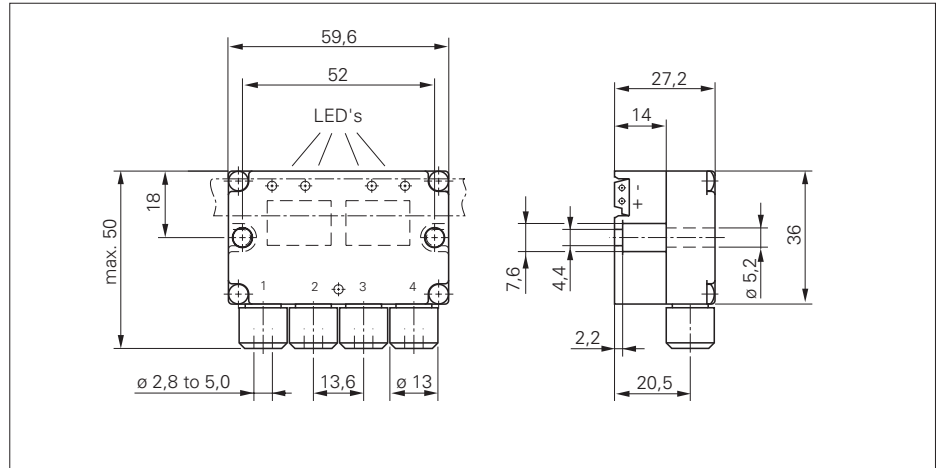


AS-Interface module

ASIA 36A2211

Art.-Code: 131709

- Specification 2.11 / Mini-Module
- Standard addressing mode as S-slave; up to 31 modules
- Profile S - 3.F.F
- Connection for two 3-wire sensors and two actuators
- Power supply for sensors and actuators via bus
- Spring loaded terminals (cage clamp)
- Fault diagnosis LED's



bus data	
voltage supply range	26,5 - 33,1 VDC
supply current	≤ 200 mA
reverse polarity protection	yes
E/A configuration	3 HEX
ID-Code / ID-2 code	F HEX / F HEX
AS-i voltage indicator / error indicator	green LED / red LED
inputs	
supply voltage for sensors	18 - 30 VDC
short-circuit protection with feedback	yes
total current for sensors -25...+40 °C	≤ 170 mA minus total current actuators
total current for sensors +40...+70 °C	≤ 130 mA minus total current actuators
polarity of the inputs	PNP
input current high / low	≥ 1,5 mA / ≤ 0,5 mA
input voltage high / low	> 10 VDC / < 5 VDC
input indicator	yellow LED
outputs	
switching element / polarity	transistor / sourcing (PNP)
total current for actuators -25...+40 °C	≤ 170 mA minus total current sensors
total current for actuators +40...+70 °C	≤ 130 mA minus total current sensors
switching current per output I _{max}	100 mA
short-circuit protection with feedback	yes
watchdog for bus monitoring	yes
output indicator	yellow LED
general	
protection class	IP 65 (with EPDM cable)
temperature range / storage temperature	-25...+70 °C / -25...+85 °C
housing material	PBT / PC (UL 94 V-0)
mounting	screws (2 x M4)
EMC	refer to the AS-i brochure
certificate no.	60202

26,5 - 33,1 VDC
≤ 200 mA
yes
3 HEX
F HEX / F HEX
green LED / red LED
18 - 30 VDC
yes
≤ 170 mA minus total current actuators
≤ 130 mA minus total current actuators
PNP
≥ 1,5 mA / ≤ 0,5 mA
> 10 VDC / < 5 VDC
yellow LED
transistor / sourcing (PNP)
≤ 170 mA minus total current sensors
≤ 130 mA minus total current sensors
100 mA
yes
yes
yellow LED
IP 65 (with EPDM cable)
-25...+70 °C / -25...+85 °C
PBT / PC (UL 94 V-0)
screws (2 x M4)
refer to the AS-i brochure
60202

connection diagram

The connection diagram shows the internal wiring of the AS-Interface module. It features an AS-i bus with terminals AS+ and AS-. The bus is connected to an AS-i controller chip with pins D0, D1, D2, and D3. The controller is connected to four terminals: 1 (IN), 2 (IN), 3 (OUT), and 4 (OUT). Terminal 1 is connected to the AS+ bus, and terminal 2 is connected to the AS- bus. Terminals 3 and 4 are connected to the controller's output pins D2 and D3 respectively.

general

port assignment:
D0, D1 input
D2, D3 output

possible conductor cross-sections:
sensor terminals: 0,08...0,5 mm²
actuator terminals: 0,08...0,5 mm²
max. outer cable diameter: ø 2,8...5 mm

diagnosis

ASI (green)	Error (red)	Status	Description
●	●	POWER OFF	No ASI power
⊙	○	Address = 0	Address = 0
●	○	No data exchange	Watchdog activated, Address ≠ 0
○	●	ok	ok
●	⊙	External RESET, overload	-Sensor supply overload -Sensor supply shorted
●	⊙	Error actuators	-Actuator supply overload -Actuator supply shorted

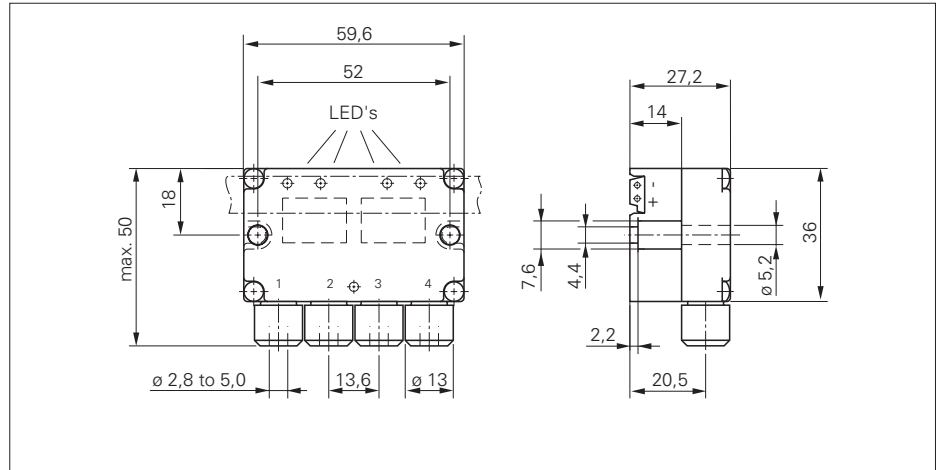
● LED dark ○ LED light ⊙ LED flashing

AS-Interface module

ASIA 36A2221

Art.-Code: 148300

- Specification 2.11 / Mini-Module
- Extended addressing mode as A/B-slave; up to 62 modules
- Profile S - B.A.E
- Connection for two 3-wire sensors and two actuators
- Power supply for sensors and actuators via bus
- Spring loaded terminals (cage clamp)
- Fault diagnosis LED's



bus data	
voltage supply range	26,5 - 33,1 VDC
supply current	≤ 170 mA
reverse polarity protection	yes
E/A configuration	B HEX
ID-Code / ID-2 code	A HEX / E HEX
AS-i voltage indicator / error indicator	green LED / red LED
inputs	
supply voltage for sensors	18 - 30 VDC
short-circuit protection with feedback	yes
total current for sensors -25...+70 °C	≤ 125 mA minus total current actuators
polarity of the inputs	PNP
input current high / low	$\geq 1,5$ mA / $\leq 0,5$ mA
input voltage high / low	> 10 VDC / < 5 VDC
input indicator	yellow LED
outputs	
switching element / polarity	transistor / sourcing (PNP)
total current for actuators -25...+70 °C	≤ 125 mA minus total current sensors
switching current per output I_{max}	100 mA
short-circuit protection with feedback	yes
watchdog for bus monitoring	yes
output indicator	yellow LED
general	
protection class	IP 65 (with EPDM cable)
temperature range / storage temperature	-25...+70 °C / -25...+85 °C
housing material	PBT / PC (UL 94 V-0)
mounting	screws (2 x M4)
EMC	refer to the AS-i brochure
certificate no.	60201

connection diagram																													
<p>The diagram shows the internal circuitry of the AS-Interface module. It includes a central AS-i chip with pins labeled AS+ and AS- on the left, and D0, D1, D2, and D3 on the right. The D0 and D1 pins are connected to two output terminals (3 and 4), while D2 and D3 are connected to two input terminals (1 and 2). The terminals are labeled with voltage levels: 1 and 2 are connected to + and - IN, while 3 and 4 are connected to + and - OUT.</p>																													
general																													
port assignment:																													
D0, D1	output																												
D2, D3	input																												
possible conductor cross-sections:																													
sensor terminals:	0,08...0,5 mm ²																												
actuator terminals:	0,08...0,5 mm ²																												
max. outer cable diameter:	$\varnothing 2,8...5$ mm																												
diagnosis																													
<table border="1"> <thead> <tr> <th>ASI (green)</th> <th>Error (red)</th> <th>Status</th> <th>Description</th> </tr> </thead> <tbody> <tr> <td>●</td> <td>●</td> <td>POWER OFF</td> <td>No ASI power</td> </tr> <tr> <td>●</td> <td>○</td> <td>Address = 0</td> <td>Address = 0</td> </tr> <tr> <td>○</td> <td>○</td> <td>No data exchange</td> <td>Watchdog activated, Adresse $\neq 0$</td> </tr> <tr> <td>○</td> <td>●</td> <td>ok</td> <td>ok</td> </tr> <tr> <td>●</td> <td>⊕</td> <td>External RESET, overload</td> <td>-Sensor supply overload -Sensor supply shorted</td> </tr> <tr> <td>●</td> <td>⊕</td> <td>Error actuators</td> <td>-Actuator supply overload -Actuator supply shorted</td> </tr> </tbody> </table> <p> LED dark LED light LED flashing </p>		ASI (green)	Error (red)	Status	Description	●	●	POWER OFF	No ASI power	●	○	Address = 0	Address = 0	○	○	No data exchange	Watchdog activated, Adresse $\neq 0$	○	●	ok	ok	●	⊕	External RESET, overload	-Sensor supply overload -Sensor supply shorted	●	⊕	Error actuators	-Actuator supply overload -Actuator supply shorted
ASI (green)	Error (red)	Status	Description																										
●	●	POWER OFF	No ASI power																										
●	○	Address = 0	Address = 0																										
○	○	No data exchange	Watchdog activated, Adresse $\neq 0$																										
○	●	ok	ok																										
●	⊕	External RESET, overload	-Sensor supply overload -Sensor supply shorted																										
●	⊕	Error actuators	-Actuator supply overload -Actuator supply shorted																										