

IWRM 08U9501/S35

Distanz messend

Distance measuring

Mesure de distances

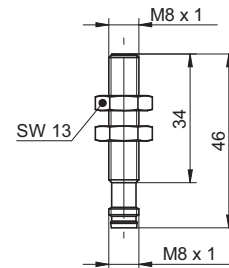


10144548



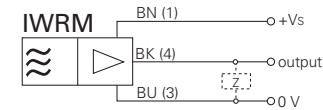
Baumer Electric AG · CH-8501 Frauenfeld
Phone +41 (0)52 728 1122 · Fax +41 (0)52 728 1144

Abmessungen Dimensions Dimensions

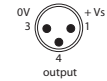


- Alle Masse in mm
- All dimensions in mm
- Toutes les dimensions en mm

Elektrischer Anschluss Connection diagram Schéma de raccordement

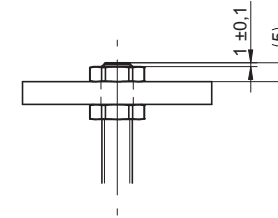


BN = Braun/brown/brun
BK = Schwarz/black/noir
BU = Blau/blue/bleu



- Vor dem Anschliessen des Sensors die Anlage spannungsfrei schalten.
- Disconnect power before connecting the sensor.
- Mettre l'installation hors tension avant le raccordement du détecteur.

Empfohlene Montage für optimale Messergebnisse Recommended setup for optimal results Configuration recommandée pour des résultats optimaux



- Ein von der Vorschrift abweichender Einbau kann zu markanter Beeinflussung der Ausgangskennlinie führen.
- Failure to observe enclosed recommended mounting instructions will result in an undesired deviation from published output characteristic curve.
- Le non-respect des instructions de montage recommandées peut entraîner une déviation non conforme aux caractéristiques des courbes de sortie publiées.

| | |
|---|--|
| <p>Canada Baumer Inc. CA-Burlington, ON L7M 4B9 Phone +1 (1)905 335-8444</p> | <p>Italy Baumer Italia S.r.l. IT-20090 Assago, MI Phone +39 (0)2 45 70 60 65</p> |
| <p>China Baumer (China) Co., Ltd. CN-201612 Shanghai Phone +86 (0)21 6768 7095</p> | <p>Singapore Baumer (Singapore) Pte. Ltd. SG-339412 Singapore Phone +65 6396 4131</p> |
| <p>Denmark Baumer A/S DK-8210 Aarhus V Phone: +45 (0)8931 7611</p> | <p>Sweden Baumer A/S SE-56133 Huskvarna Phone +46 (0)36 13 94 30</p> |
| <p>France Baumer SAS FR-74250 Fillinges Phone +33 (0)450 392 466</p> | <p>Switzerland Baumer Electric AG CH-8501 Frauenfeld Phone +41 (0)52 728 1313</p> |
| <p>Germany Baumer GmbH DE-61169 Friedberg Phone +49 (0)6031 60 07 0</p> | <p>United Kingdom Baumer Ltd. GB-Watchfield, Swindon, SN6 8TZ Phone +44 (0)1793 783 839</p> |
| <p>India Baumer India Private Limited IN-411058 Pune Phone +91 20 66292400</p> | <p>USA Baumer Ltd. US-Southington, CT 06489 Phone +1 (1)860 621-2121</p> |

Technische Daten

Technical data

Données techniques

| | | | |
|---------------------------------------|-------------------------------------|--|--------------------------|
| Messdistanz Sd | Measuring distance Sd | Distance de mesure Sd | 0...2 mm |
| Einbauart | Mounting type | Type de montage | Quasi- bündig/flush/noyé |
| Ausgangssignal | Output signal | Signal de sortie | 0...10 VDC |
| Betriebsspannungsbereich (UL-Class 2) | Voltage supply range (UL-Class 2) | Plage de tension (UL-Class 2) | 15...30 VDC |
| Stromaufnahme max. (ohne Last) | Current consumption max. (no load) | Consommation max. (sans charge) | 25 mA |
| Lastwiderstand @ +Vs min./+Vs max. | Load resistance @ +Vs min./+Vs max. | Résistance de charge @ +Vs min./+Vs max. | > 1000 Ohm |
| Kurzschlussfest | Short circuit protection | Protégé contre courts-circuits | ja/yes/oui |
| Verpolungsfest | Reverse polarity protection | Protégé contre inversion polarité | ja/yes/oui |
| Material (aktive Fläche) | Material (sensing face) | Matériau (face active) | PBT |
| Gehäusematerial | Housing material | Matériau du boîtier | Stainless steel |
| Arbeitstemperatur | Operating temperature | Température de fonctionnement | +10...+60°C |
| Schutzklasse | Protection class | Classe de protection | IP67 |

